

FAMILY HOMES

SIDDHRAJ
ZOEY

GANDHINAGAR



SIDDHRAJ ZOEVY | GANDHINAGAR

Celebrating Families!



Homes protect and secure. Families live together and grow, as community-living celebrates diversity.

Welcome to Zoey, a place where we believe you will find your home, your peace. Allow us to take you through few detailed aspects of design and our years of understanding 'quality of life'. We embark upon a journey of process, people and purpose as we unfold what your new home entails. Upgrade to a new 'peace of life'. Choose your perfect size and become a part of the community you will cherish for a lifetime.

At Siddhraj we understand individual needs and strive to create the right environment for individuals, families & the community, to thrive as they desire.

Chetan Patel
Director, Siddhraj Infra Pvt. Ltd.

A strong vision to build a Community experience!

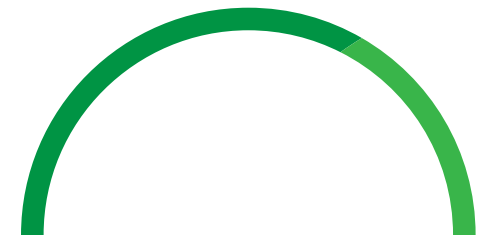
The effort has always been to deliver beyond promise and that is what has defined Siddhraj across its portfolio of few but formidable residential, commercial and retail spaces. The prime concern and innate desire for the group has been to connect 'product to people' to ensure long-lasting usable spaces while building conscious and happy users. Design, construction technique, materials and methods, timeless aesthetic aspirations inspired through travel and learning and respect for teams of consultants with proven track-record, define Siddhraj projects while comfortably differentiating them from most around.





What is the base philosophy behind all Siddhraj projects?

“We talk. We dream. We Build.” At Siddhraj one of the pillars that we stand on is the management of the quality of product & services. At Siddhraj we aspire to deliver a product that’s worthy of the name ‘Siddhraj’. Our projects are inspired, innovative and invaluable structures and spaces that enhance life and take community-living to the next level.



Designed to be a Home

“The design here focuses on creating a home that stands out the test of time and draws inspiration from the gardens outside, creating a prolific lifestyle inside.”



Home = Family

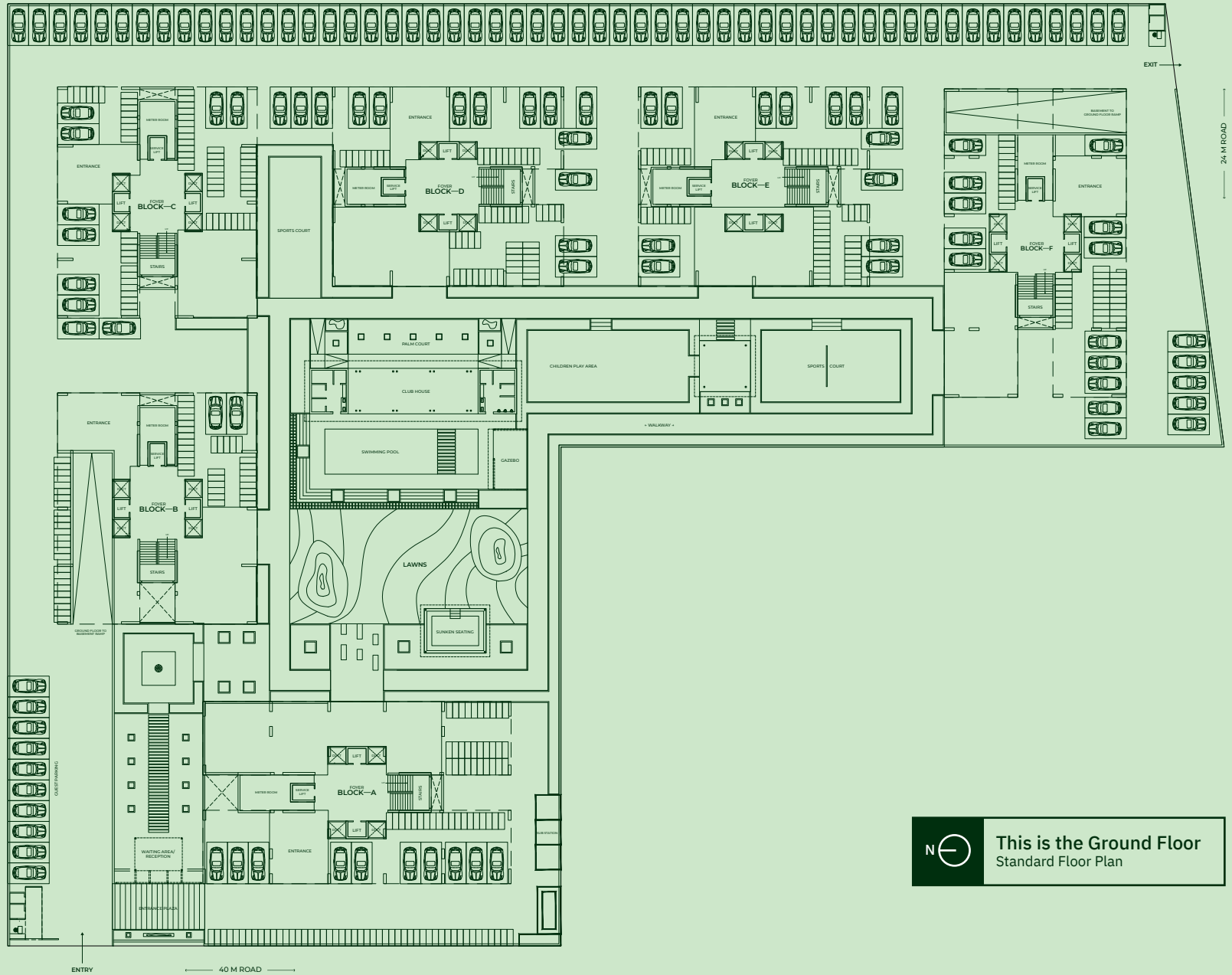
As a family your home is a set of rooms with various functions that work for you, for your privacy and moments of interaction everyday- while it becomes an important unit as part of a large like-minded community.




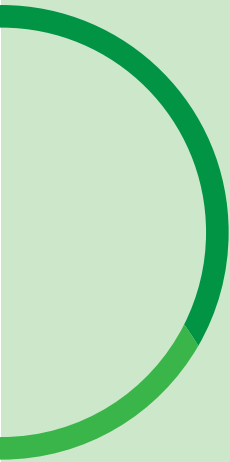
SIDDHRAJ ZOEVY | GANDHINAGAR

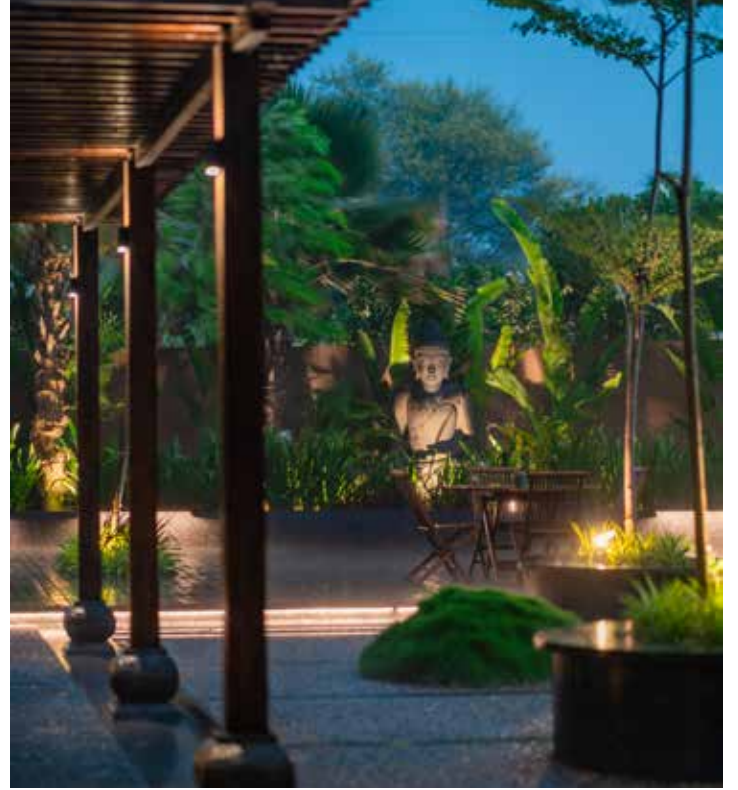


SIDDHRAJ ZOEVY | GANDHINAGAR



 This is the Ground Floor
Standard Floor Plan





A Tropical Experience promised and delivered in 2019. A project with 110 apartments at Sargasan, Gandhinagar.

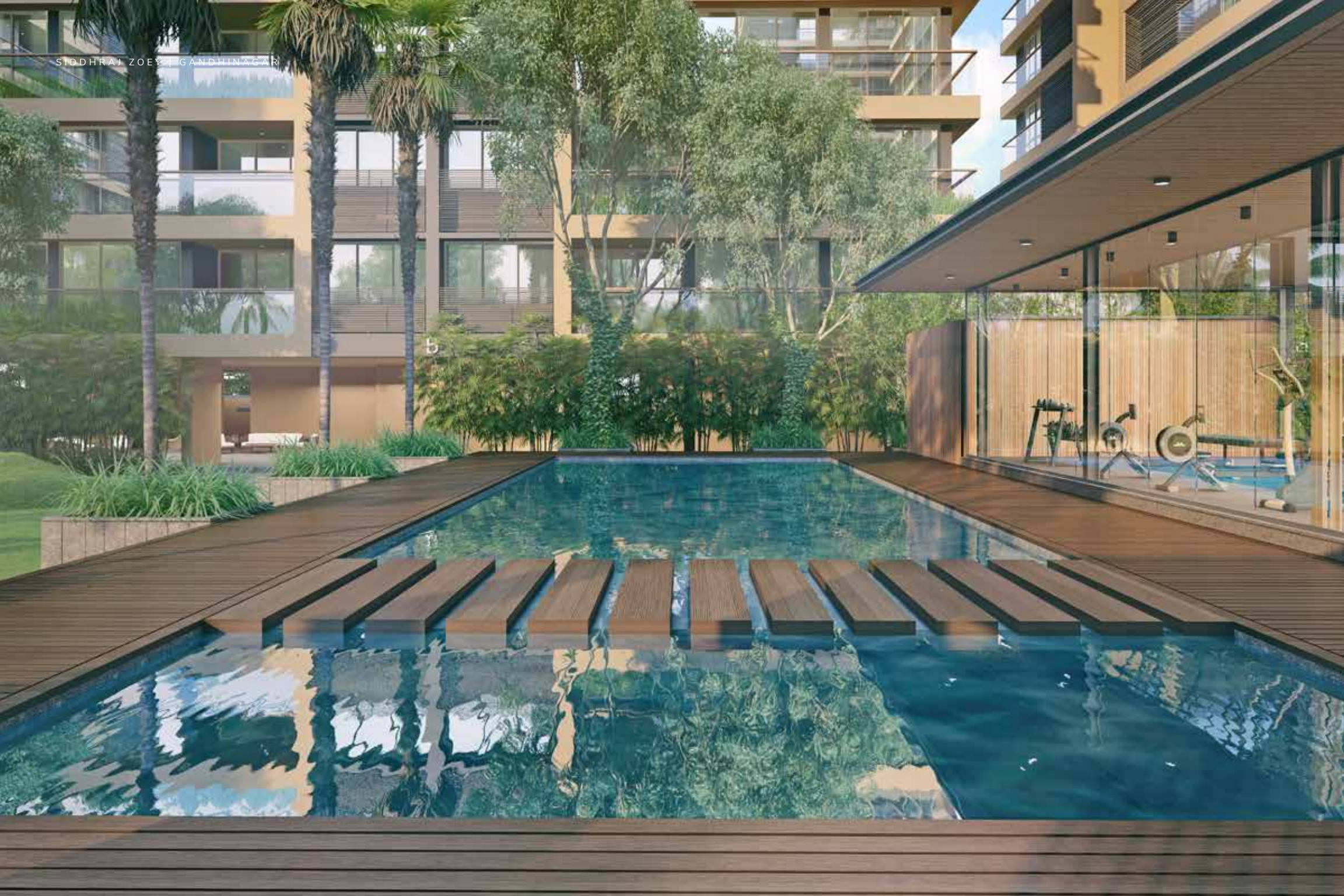
SIDDHRAJ | Z+

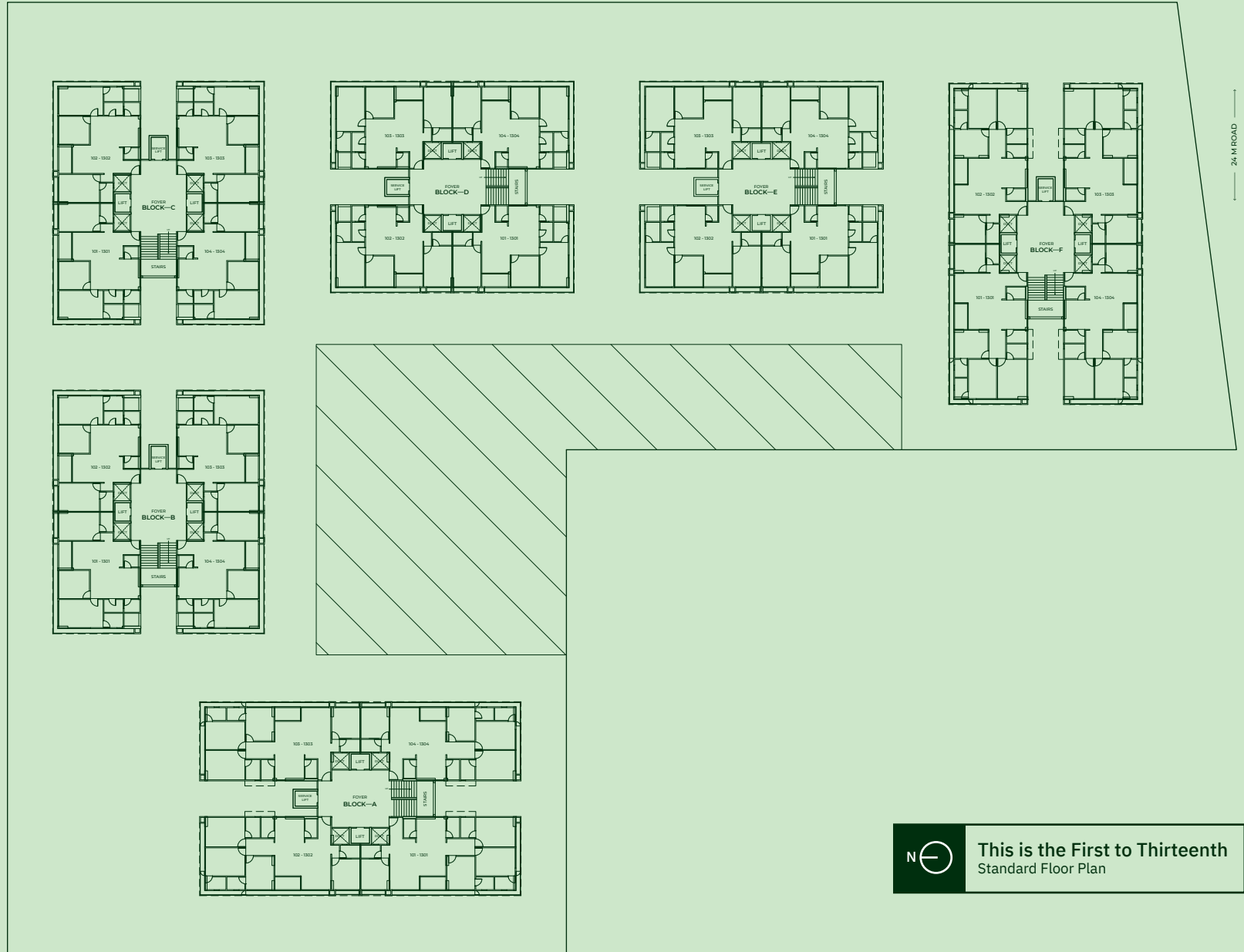



Home = Comfort

Needs fulfilled and aspirations fuelled keep us as humans comforted, while seeking peace in our abodes. Siddhraj Zoey does precisely that in sync with the locality, it's people, the surrounding, the environment and the strong connect with all modern aspects of living and life. Siddhraj developers has envisioned ZOEY as a residential haven that's gated, secure and well organised to facilitate better and easy maintenance and most importantly a 'selected and filtered client-base' to ensure peace and comfort as a neighbourhood.







 **This is the First to Thirteenth**
Standard Floor Plan

40 M ROAD

24 M ROAD

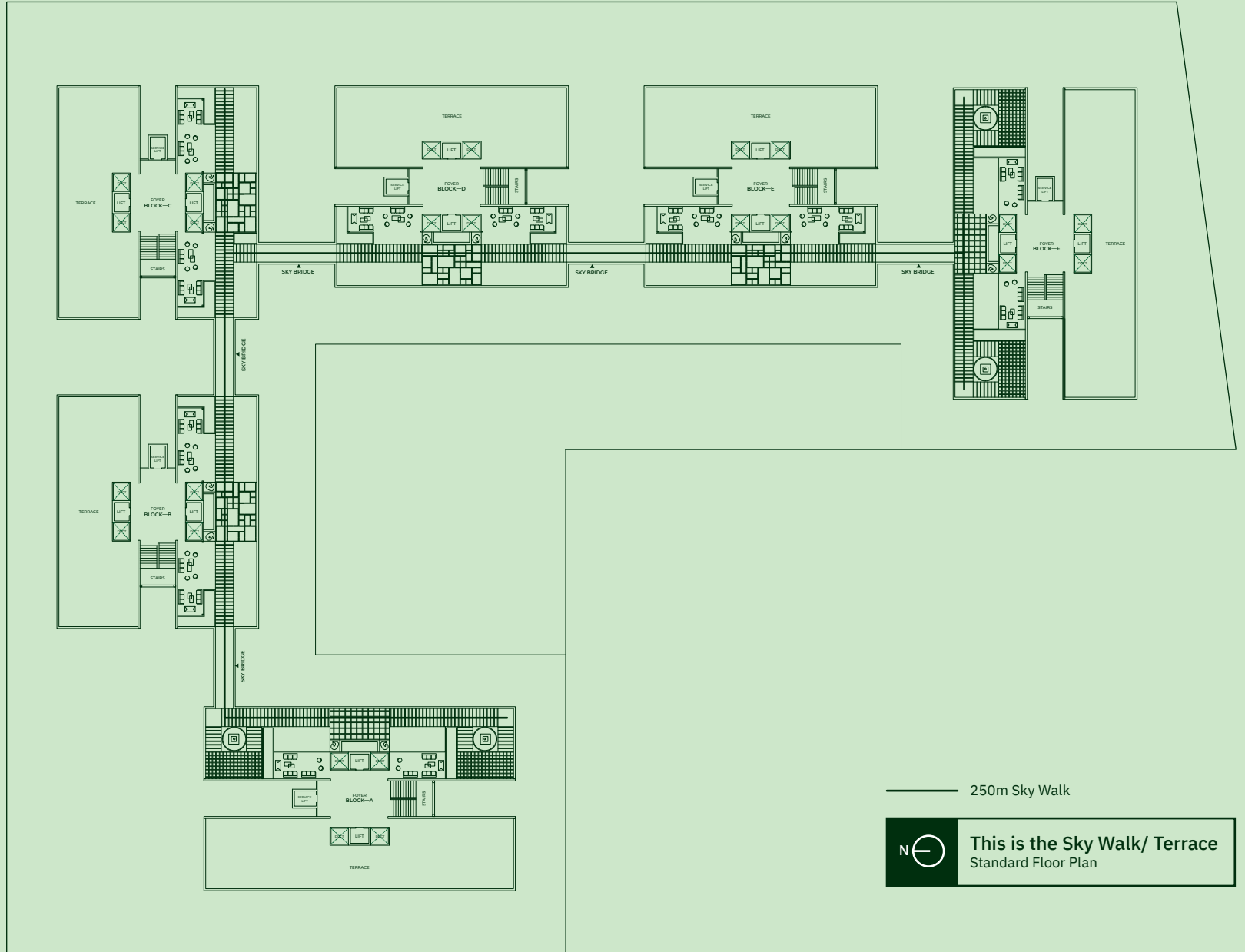
Home = Community

We already understand that it's the community that is the extension of an individual family while being that strong comforting factor. Siddhraj ZOEY is a perfect balance of usable common space and amenities that keeps one relaxed, find peace and have a habitual activity- all within the commune.

HOME= FAMILY + COMFORT + COMMUNITY







250m Sky Walk



This is the Sky Walk/ Terrace
Standard Floor Plan

SIDDHRAJ ZOEVY | GANDHINAGAR

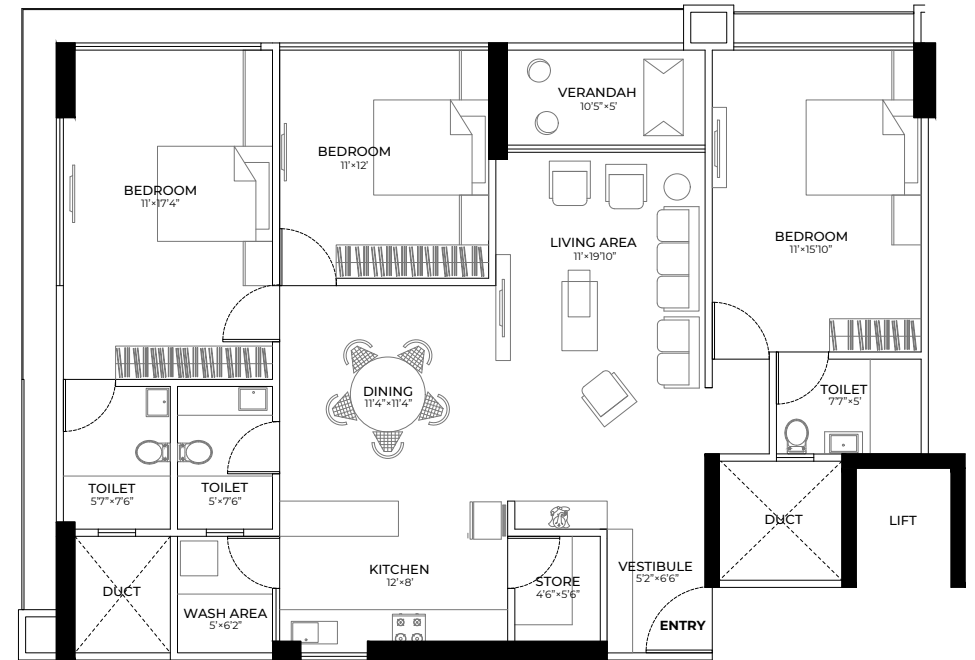
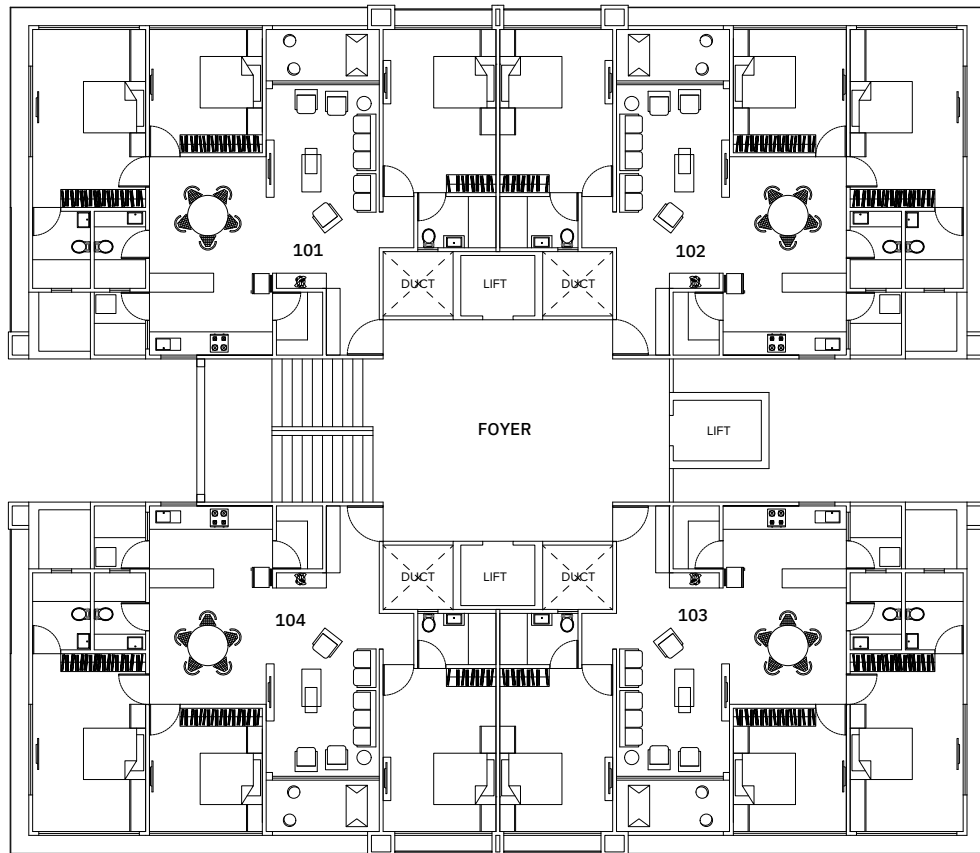
The Sky Walk at The Terrace



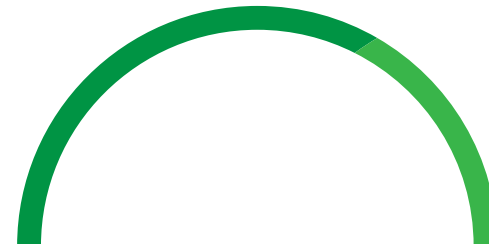
“We think wide and deep. We strive to deliver on our vision, dream and promise.”

Chetan Patel
Director, Siddhraj Infra Pvt. Ltd.

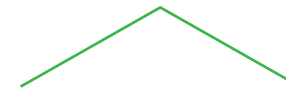
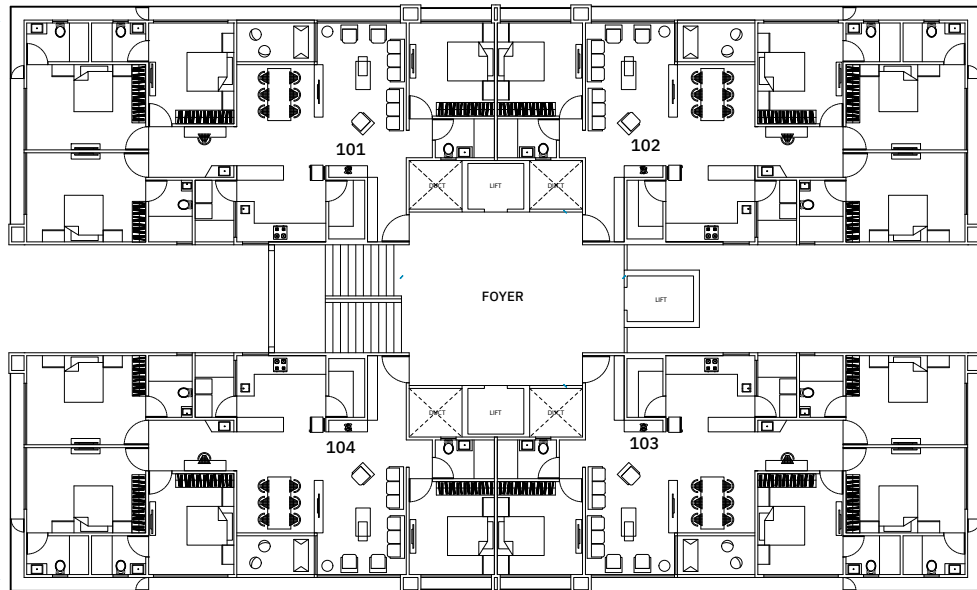
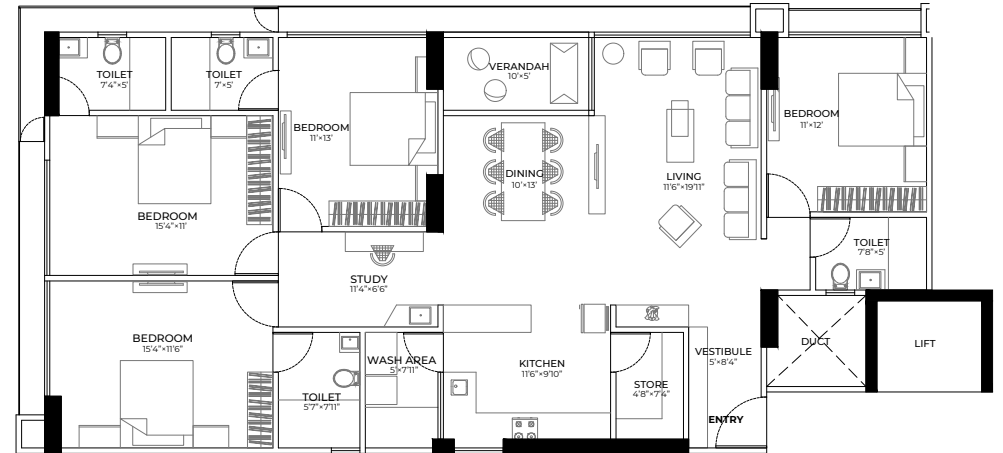
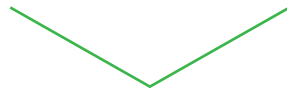
Typical 3BHK Cluster Plan



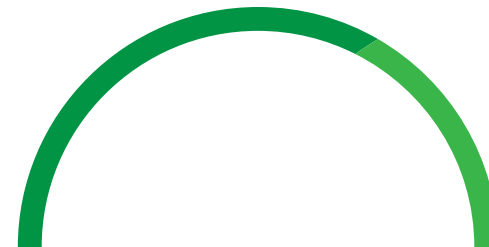
Typical 3BHK Unit Plan



Typical 4BHK Cluster Plan



Typical 4BHK Unit Plan



Partners in Growth



Principle Architect
VPA - Vipul Patel Architects

A team of two generations of architects. The firm has an ideal design approach that amalgamates architecture, interior design, landscape and product design. The practise focuses to keep functionality and practicality as a top priority in all projects. Every project showcases an eccentric blend of ideas, great team efforts and creativity.



MEPF Consultants
Apoorva Parikh/ Bhadresh Bhavsar/ Trupti Desai



At the outset, they assert based on their past experience in building mammoth quantum of residential higher class properties, while furnishing all kinds of safety and security installations, health and well being systems that is integrated and holistic in nature. Again based on the experiences in the past they concur, "More the green space, More the Oxygen for residents as well as more open space which equals to more fire safety." Planning and design of structures in detail like air-conditioners in homes and its immediate impact to a structure & surroundings is taken into consideration. The quick disposal of the carbon dioxide and heat waste into the larger open and green space mitigates and minimizes the change in surrounding atmospheric temperature.

The team is also used to designing water supply and sanitary systems in different aspects of plumbing and drainage disposal. They plan sewerage and potable water treatment facilities with the latest technology, by the virtue of design to generate usable water for flushing the sanitising mechanism as well as using the same for gardening.



Structural Consultant
Ameer Associates

Founded in 2005, Ameer Associates is a Structural engineering firm that provide services to the design and development community. With over 500 completed projects, their experience in various private and public sector projects has given them a unique insight into client needs and concerns. Their ability to provide innovative designs that meet the client's needs and maintain the architect's design, providing optimized structural solutions, is a matter of pride for them as well as the project.



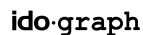
Marketing Consultant
TPS - The Property Shop



TPS - The Property Shop is a premier marketing consultancy firm which specializes in real estate sales and promotion and is involved in branding and marketing of sites, be it residential or commercial. They are one of the biggest real estate sales company operating in Gandhinagar with a single client focused attitude to give the best to the customers be it investment or end-use, by making sure that all get exactly what they want.

Strategy & Design Consultant
ido.graph

A multidisciplinary design firm with clients across the globe and industries with a strong value based framework. Graphic design is governed by contextual aspects and keeps evolving by the virtue of design principles – both tried and experimental. Aesthetics are governed by design and visual principles but communication is contextual, brand and positioning centric. ido.graph partners to help build pure positioning based identities & advertsing for businesses & retail ventures.





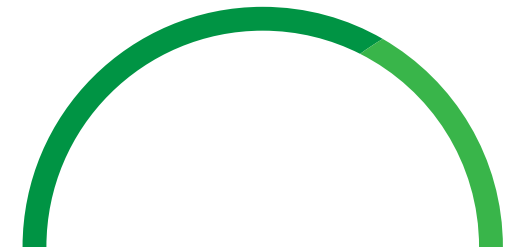
Team Siddhraj

Siddhraj has made a successful foray into residential, commercial and retail spaces with a strong foundation in Gandhinagar. The efforts at Siddhraj are always well informed and the properties are designed in tandem to complement the landscape of the place. With the collaboration of unique design and the latest technology, Siddhraj has created a strong foothold in Gandhinagar.

Siddhraj believes in giving joy to their client through their buildings, that are so designed to make one feel close to nature. The Siddhraj long-term vision is to make safe, clean, efficient and technologically advanced buildings.



Z. The Final Letter attributes to our firm belief of Experience. Quality. Vision.

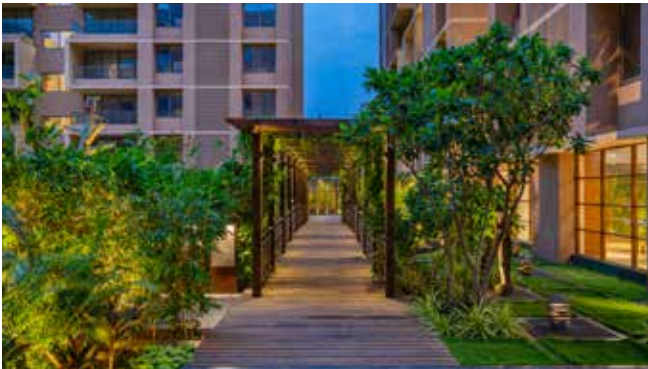


Z. The Final Letter.



Siddhraj Z2 (Ongoing)

This concept is a mélange of functionality and character. The retail and commercial space encompassing all of 6 floors with an advantageous joining of the East and the West Wing with a skybridge is a visual treat. The building optimises on a given context to be able to create a milestone while fulfilling the need to monetize both for the developer, the real estate owner or occupier as well as finally the end user. The entire site is spliced into two and made into a public thoroughfare across the north and south axes connecting two main roads by a 30m Urban Street between the east and west wings.



Siddhraj Z+ (Delivered)

Siddhraj Z+, the name given to the scheme reflects the vision of upholding the values of our tradition blending it sophisticatedly with contemporary style of living. The word symbolizes an identity which conserves the secret of universe inside its very soul. It placates the senses and promotes a feeling of concord with the nature. The philosophy is to endorse family oriented living with the warmth of togetherness and community spaces are also provided for individuals & for spending some moments with family. The apartments are aesthetically designed and open to your own interpretations.

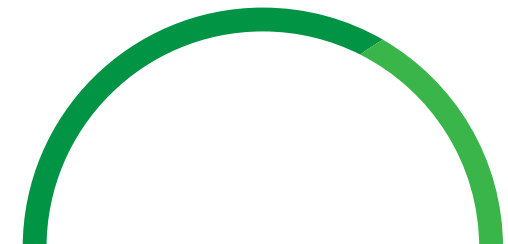


Spaces brought to Life!



Specifications

| | |
|--------------------------------|--|
| Structure | Earthquake resistant structure |
| Wall Finish | Inside wall plaster with putty finish External wall double coat plaster with texture paint |
| Door & Window | Main Door : Designer flush door with natural veneer,with wooden frame, Other Doors: Flush door with wooden frame. Windows: Premium quality aluminum windows |
| Flooring | Vitrified flooring in living,dining,kitchen and all bedrooms. |
| Kitchen | Mirror polished granite platform with SS sink, tile dado upto lintel level. |
| Bathroom & Plumbing | Vitrified tiles upto lintel level, CPVC-UPVC pipes and branded plumbing accessories with company warranty, Branded ceramic fittings, Electric geyser point and exhaust fan provision in all bathrooms. |
| Wash Area | Kota stone floor in wash area, dado glaze tiles, Electric and plumbing points for washing machine and water purifier. |
| Electrification | Three phase conc copper wiring with ISI wires and branded modules. ELCB/MCB with internal distribution board, Provision for AC, Provision for TV cable and telephone points. |
| Intercom system | Intercom system in all units. |
| Terrace | Tile/China Mosaic in terrace area with water proofing |










Head Office

201, Siddhraj Zavod, Near Infocity & Sargasan
Crossroads, Gandhinagar 382421

stay connected with the 'Z' Community on
   [siddhrajdevelopers](https://www.facebook.com/siddhrajdevelopers)

Siddhraj Zoey

Besides Maruti Magnum, Near Axis Bank,
Randesan, Gandhinagar 382007

+91 88661 05904 or +91 97251 07999
siddhrajinfrapvtltd@gmail.com

DISCLAIMER

The brochure is for the easy presentation of the Project. It should not be considered as a part of the legal documents. For further information regarding the project the customer is requested to check the details on RERA website or at the Developer's office before going ahead with the booking. The furniture and fixtures, electrical appliances and other loose items shown in the brochure are only for illustrative purposes and do not form a part of the standard product on sale. The furniture layout shown in the brochure is only suggestive and subject to change as per site conditions and as per the instructions of the Project Architect. The Promoter / Developer reserves the right to make changes in the Project, its amenities and specifications as may be suggested by the Project Architect or the Structure consultant and any such changes made shall be binding on the customers / members of the Project. The Promoter/Developer reserves the right to make minor on-site changes during the course of construction and such changes shall be binding on all the members / customers of the Project. The images (interior and exterior views) in the brochure are computer stimulated graphics for representational purpose and are subject to errors and omissions. The images used may be stock images or images based on the architectural plans of the Project. They shall not be construed as actual depictions of the Project. The north direction shown in the brochure is approximate and can be erroneous. The Member / Customer is expected to verify the same personally before going ahead with the booking.