





DEV  
AURUM

2 & 3 BHK GLEAM LIVING



Get ready to enjoy the  
**shine of happiness**

Dreaming of a gleaming lifestyle with your loved ones, amidst a serene, peaceful yet lively neighbourhood? Dev Aurum is a place you would fall in love with on your very first visit!



Realizing real excellence



Dev Group has emerged as a leading, trustworthy name in real estate development in the heart of Green City Gandhinagar. With an impressive array of successful projects and a large number of connected, happier families, you can be assured of the finest, quality construction and amenities.





**BHAUMIK PATEL**  
ARCHITECTS

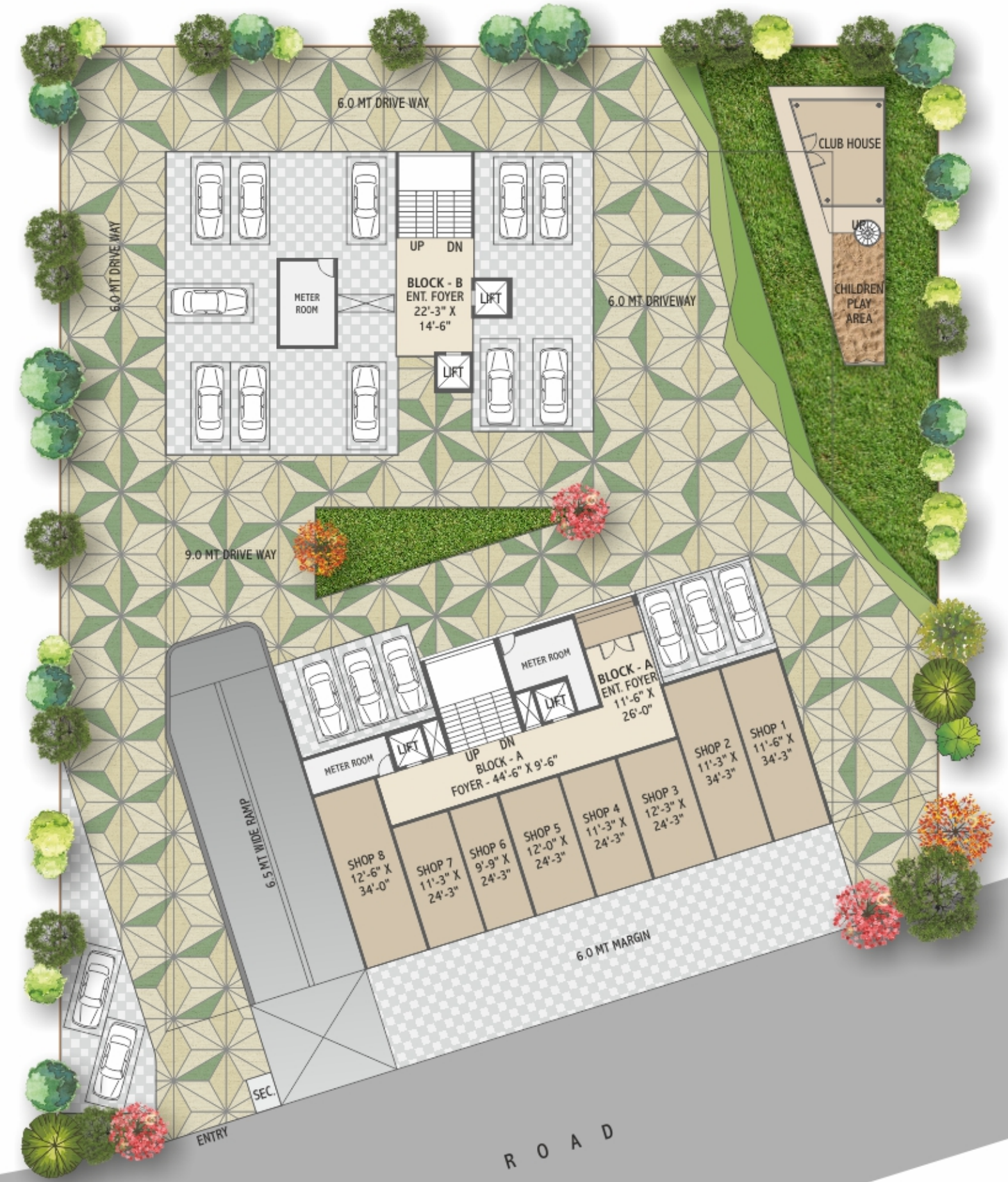
Escalating lifestyles,  
**aesthetically**



Dev Aurum is yet another, creative masterpiece by renowned architect Bhaumik Patel. Bhaumik is known for his penchant for designing lifestyles, not just buildings. Dev Aurum stands to testify it.



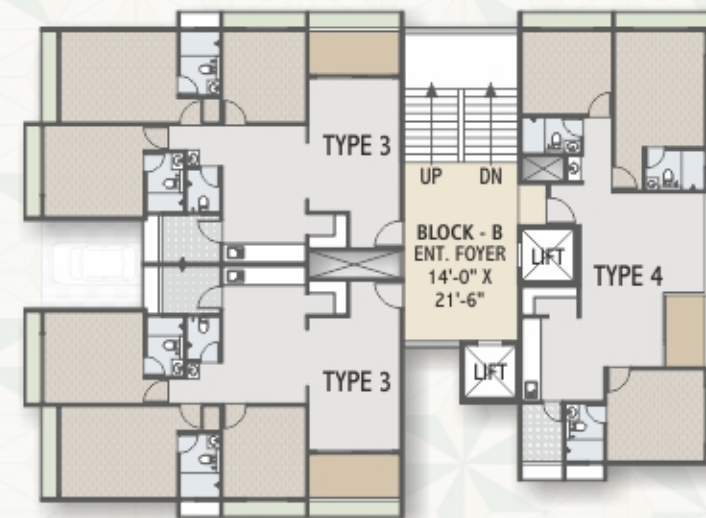
An abode of  
peace and pleasure



Take a flight to **endless joy**



TYPICAL FLOOR PLAN |

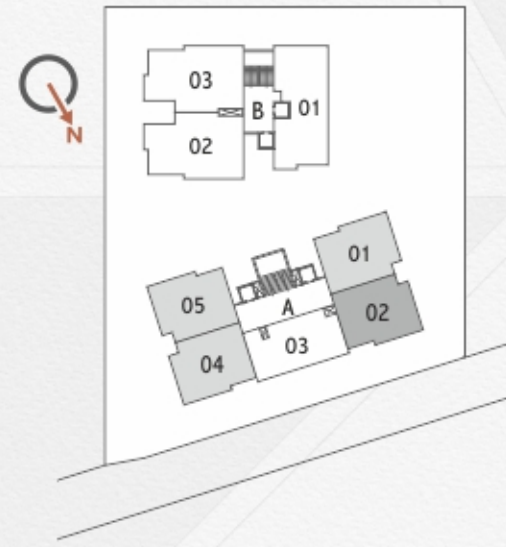




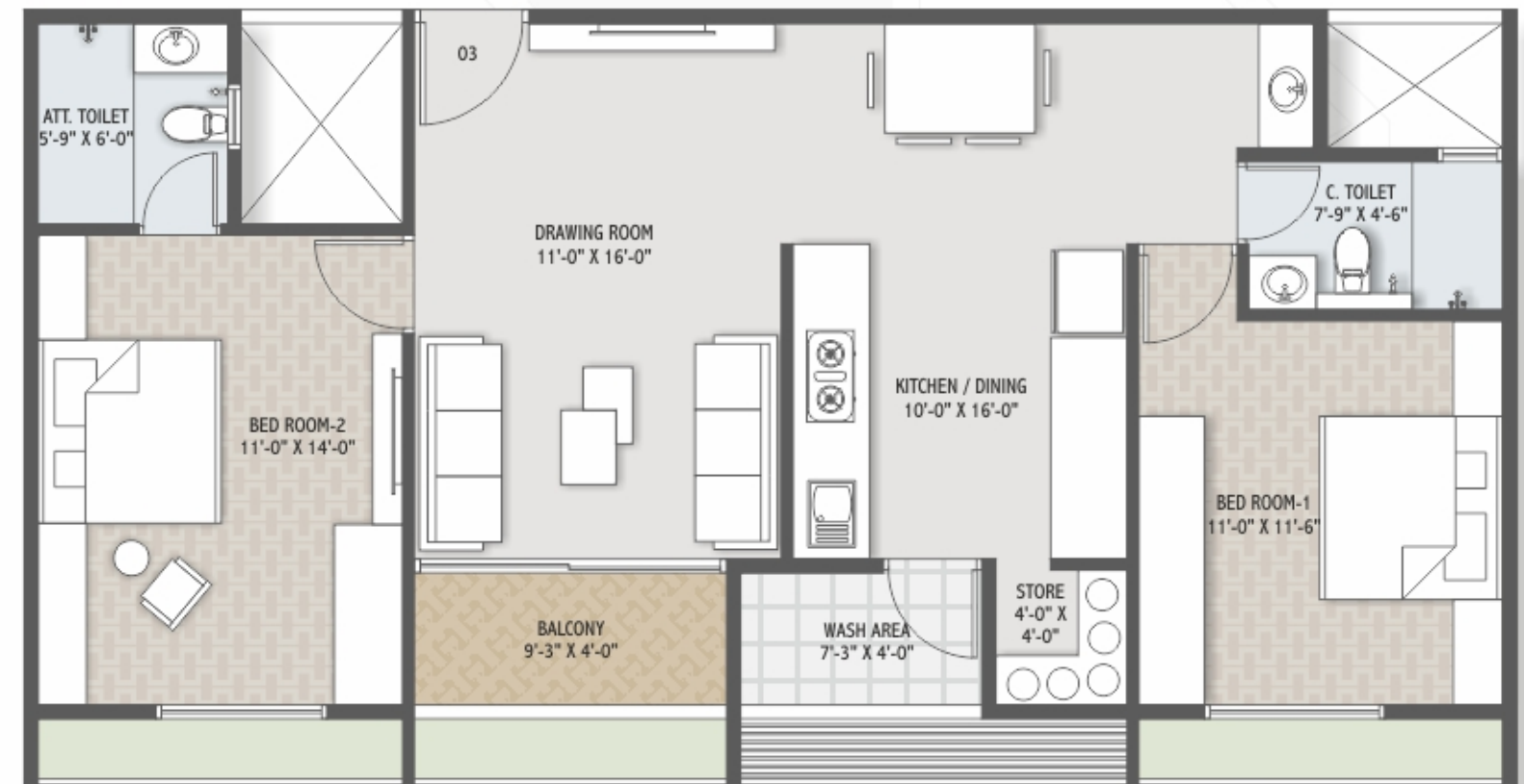
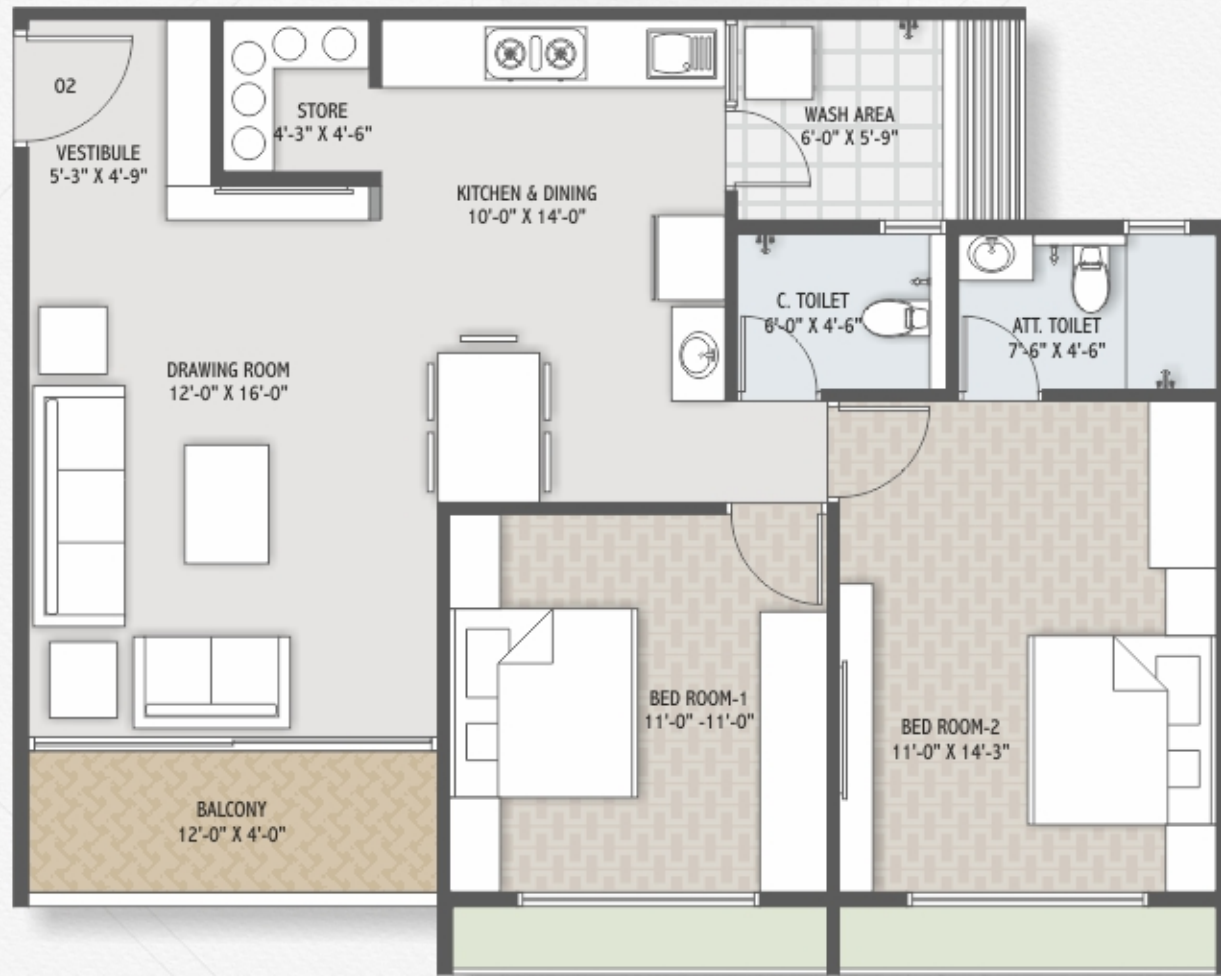
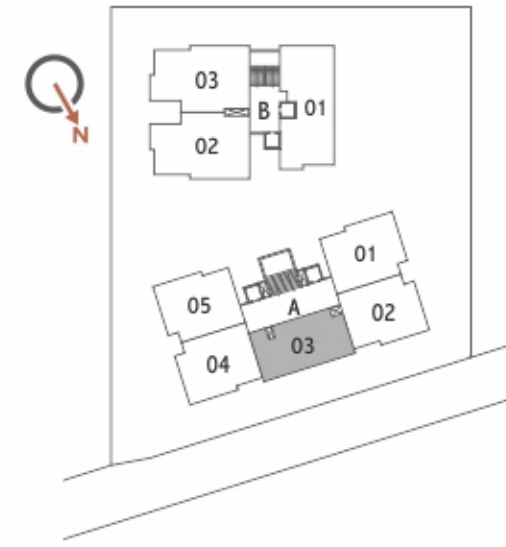
A realm of  
**greenery and openness**

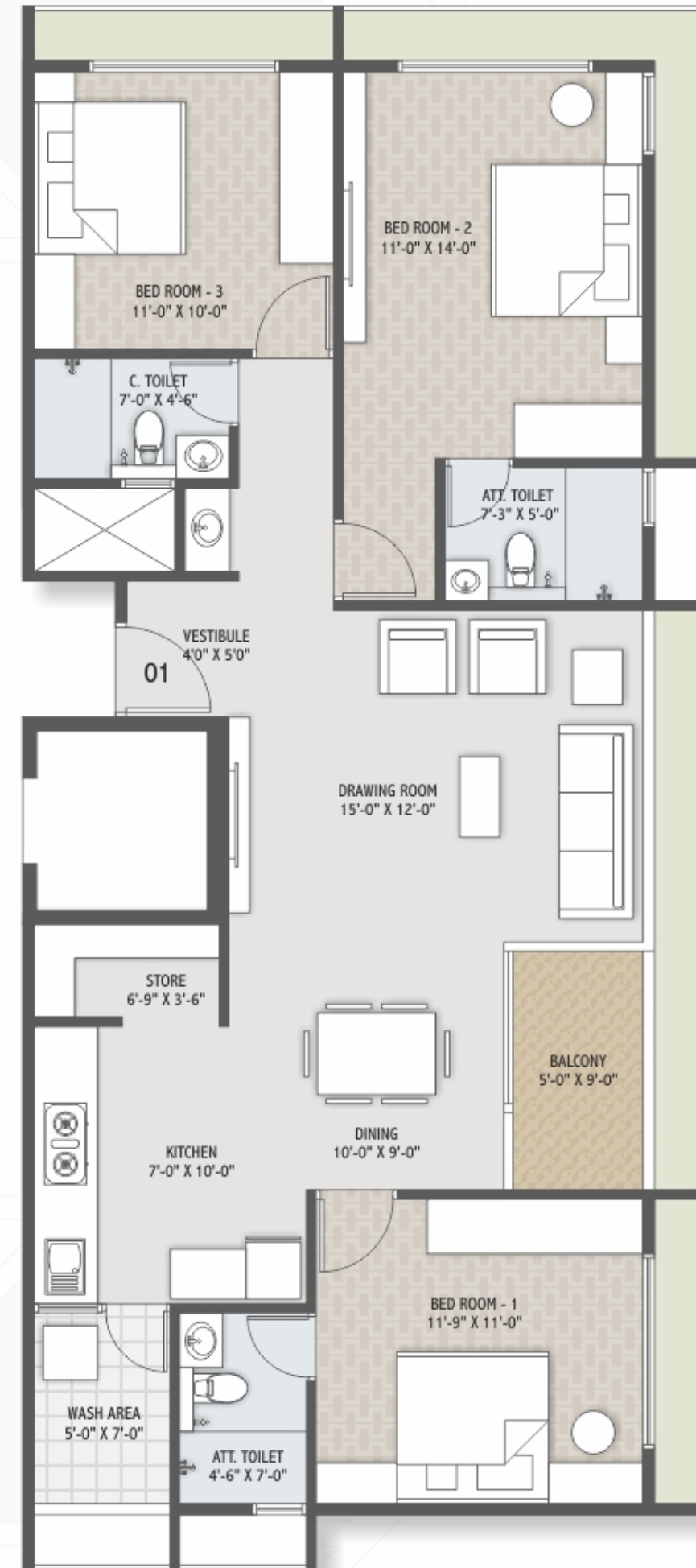
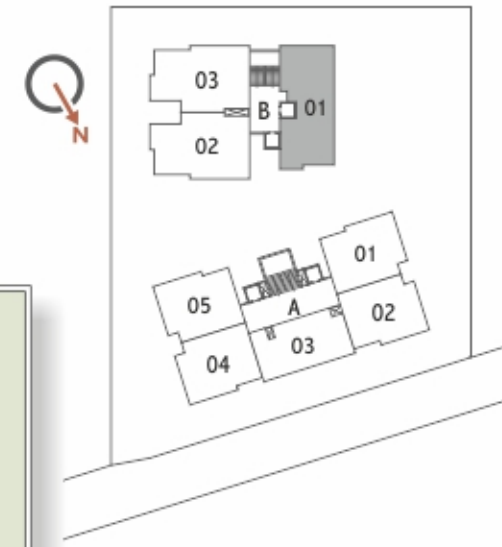
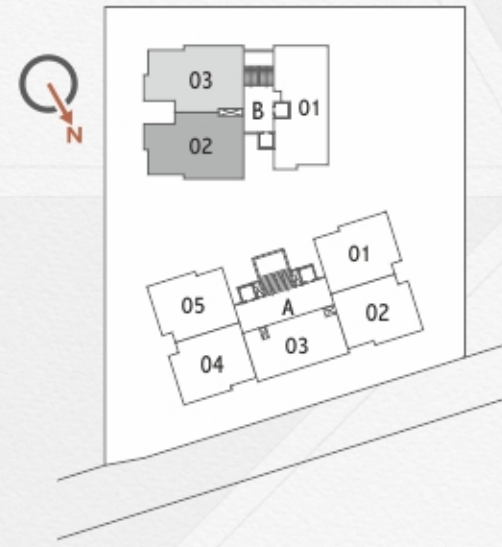


**A** BLOCK - A | TYPE - 1



**A** BLOCK - A | TYPE - 2







 **DEV  
AURUM**  
2 & 3 BHK GLEAM LIVING

A perfect place to  
**live happily**

We truly understand your expectations from a home – **Dev Aurum** is designed to realise them. With heart-warming open spaces and lively premises, it is crafted to provide you with a perfect home.





24/7 SECURITY

SENIOR CITIZEN SITTING

GYM

GAME ROOM

ROOF TOP SITTING



SITTING LOUNGE

PROVISION OF FIRE SAFETY

LIBRARY

TODDLERS PLAY AREA

ENTRANCE FOYER



Lead a happy, playful life



 **DEV**  
**AURUM**  
2 & 3 BHK GLEAM LIVING

Come fall in everlasting  
**love for your home**





## SPECIFICATIONS

### STRUCTURE



- RCC frame structure over stilts and basement.

### PLASTER WORK



- Polymer textured external walls with acrylic paint.
- Plastered internal walls with white cement based putty.

### FLOORING & TILING



- Designer vitrified tiles flooring in Drawing, Dining, Kitchen, Passage & Balconies.
- Digital/vitrified tiles in all other bed rooms.
- Tiles dado in all toilets up to lintel level.

### DOORS & WINDOWS



- Decorative polished main entrance door with locking arrangement.
- Wooden painted flush internal doors with wooden frames & SS / Brass hardware.
- Powder coated aluminum frame sliding windows with clear glass.
- Granite jambs for all windows.

### ELECTRICAL



- Concealed electrical copper wiring (ISI) with ample electrical points and MCB & ELCB protection.
- Premium quality modular switches.
- Provision for DTH TV connectivity in drawing room.
- Provision for internet connectivity.
- Electric points for Geyser in all toilets.

### KITCHEN



- Premium quality granite top kitchen platform.
- Premium SS sink with drain board.
- Designer glazed tiles dado up to lintel level.
- Glazed tiles dado up to sill level in wash balcony & below kitchen platform.
- Provision for convenient water purifier installation.
- Provision for convenient washing machine installation.
- Store room with pre-designed polished Kota stone shelves.

### PLUMBING & SANITATION



- Good quality concealed CPVC internal plumbing lines in all toilets and kitchen.
- Suspended drainage lines in all toilets with false ceiling for easy maintenance.
- Premium quality sanitary ware & fittings in all toilets.

### COMMON INFRASTRUCTURE

- 2 Premium lifts for each block.
- Finished staircase with SS railing.
- Elegant entrance foyer at ground floor level with granite/marble flooring.
- Compound Pavement with designer tiles/natural stone or blocks.
- Attractive entry gate with provision of Security cabins.
- Professionally designed landscape garden and ample parking facility & decorative lighting.
- Borewell for water supply with U.G. tank and O.H. tank.



