

LIVE BRIGHT LIKE A DIAMOND

CALLISTO  
SAPPHIRE



**3 BHK** upscale

LIVING APARTMENTS  
SHOWROOMS

# UNDER THE BRIGHT SKY OF SARGASAN,

FLAUNT A  
LUXURIOUS  
LIFESTYLE



Callisto Sapphire is the epitome of a precious lifestyle that evokes memories of living in a peaceful countryside home. A bit away yet a lot more connected to Sargasan Cross Road makes these 3 BHK Upscale homes a brilliant abode. With its marvellous infrastructure and serene ambience, Callisto Sapphire is a landmark to treasure for life.



15 CLASSIC SHOPS



74 ELEGANT HOMES



4 PRECIOUS PENTHOUSES





  
 GROUND FLOOR PLAN



  
 FIRST FLOOR PLAN

# CARVING A CLOSE-KNIT COMMUNITY

At Callisto Sapphire, it will be easy to find the daily essentials of life. The 15 Classic Shops located right outside the gates of the residential building ensure a smooth flow of life without going afar.



**15** CLASSIC SHOPS

**15** SHINING OPPORTUNITIES

SPACIOUS

ROAD-TOUCH

2 MINS FROM SG HIGHWAY



# BEHOLD FOR A LIFESTYLE

THAT LASTS A LIFETIME

Life is a journey but the short trip we take to our home every day gets etched into our memories for a lifetime. Make it worthwhile at Callisto Sapphire. The magnificent entrance, delightful environment, superbly carved waiting lounge and spacious foyer welcome you every day with familiar warmth.



2ND FLOOR PLAN



  
**TYPICAL FLOOR PLAN**



  
**PENTHOUSE (13TH FLOOR)**

# EMBRACE A SOPHISTICATED LIFE

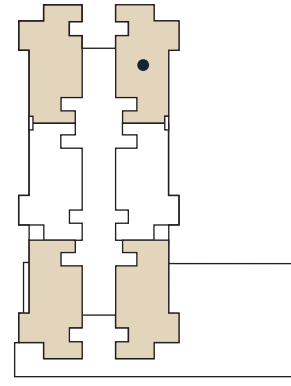
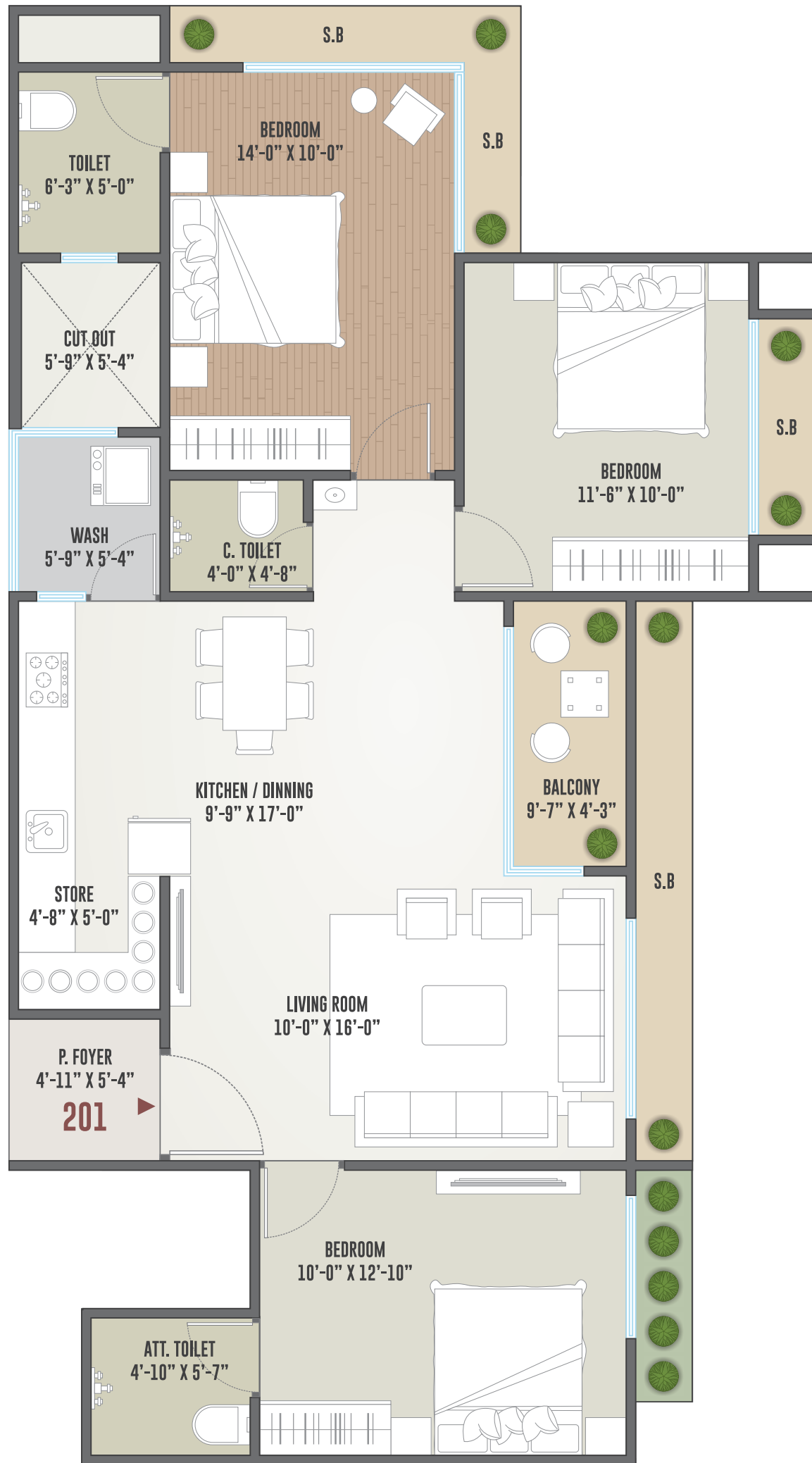
A spacious living space to gather families,  
to make memories and to enjoy the lazy afternoons.



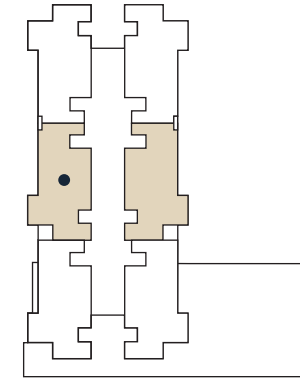
WELL-VENTILATED  
HOMES

VASTU  
COMPLIANT

OPEN VIEWS FOR  
ALL HOME OWNERS



  
**3 BHK UNIT PLAN**  
**TYPE - A**



  
**3 BHK UNIT PLAN**  
**TYPE - B**

# Carving Tranquility To Your Daily Routine

Open-air  
Amphitheatre

Professionally  
Landscaped  
Garden

Fully-  
equipped  
Gym

14 ft. WIDE YOGA DECK  
/ Multipurpose Stage

# Stepping Out Will Be The Best Decision Ever.

SENIOR CITIZEN  
SITOUT ZONE

CHILDREN  
PLAY AREA

A true walk to remember is always on lush green grass when your children are enjoying their time together at the children play area.

While they slide & glide from different rides of the children's play area, the grandparents can sit and reminisce about their youth at a specially curated sit out zone available right near the garden.

# HERE,

Reliving childhood days with your kids, bonding over a game of table tennis, letting them score over a game of football, and just admiring their sparkling smile. These are the best days for any family. And we adorn it with indoor & outdoor sports infrastructure.



## PLAYTIME WILL NEVER BE OVER



MULTI-PURPOSE  
SPORTS COURT



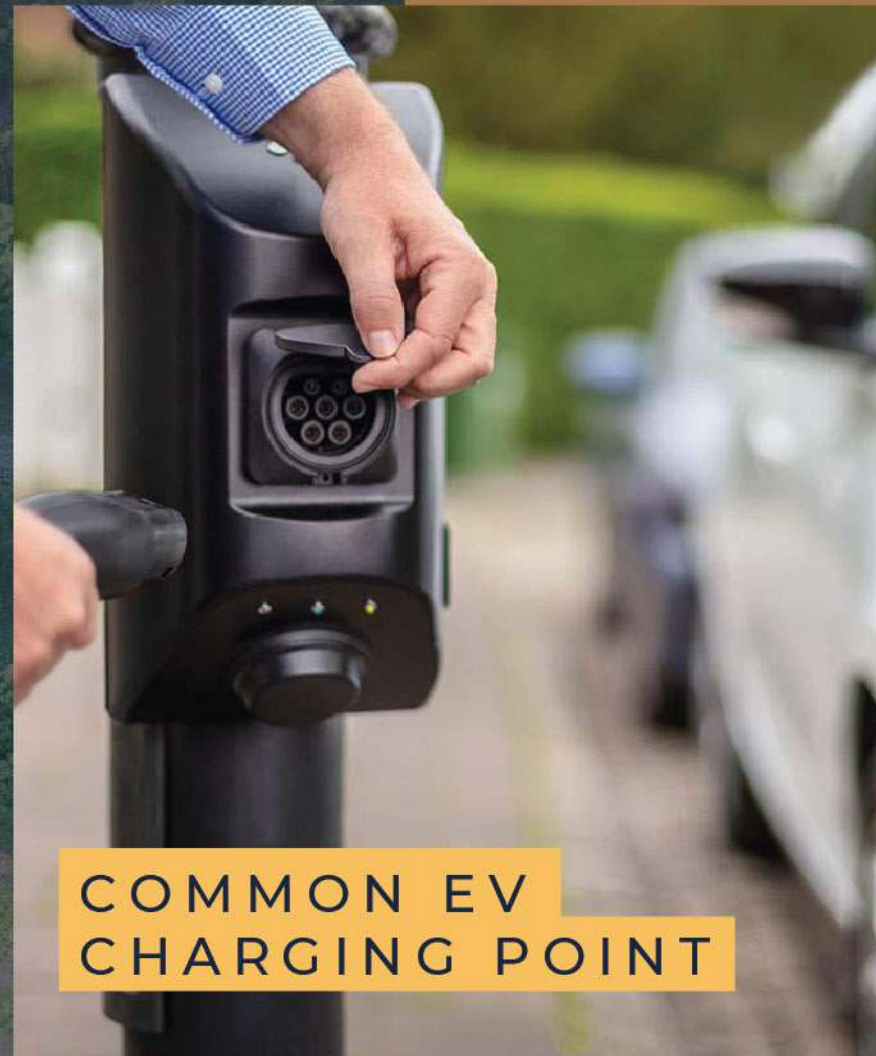
INDOOR  
GAME ZONE



CHILDREN  
DROP-OFF ZONE



# DIGITALLY SAVVY, AND A BIT OF ELECTRIFYING!



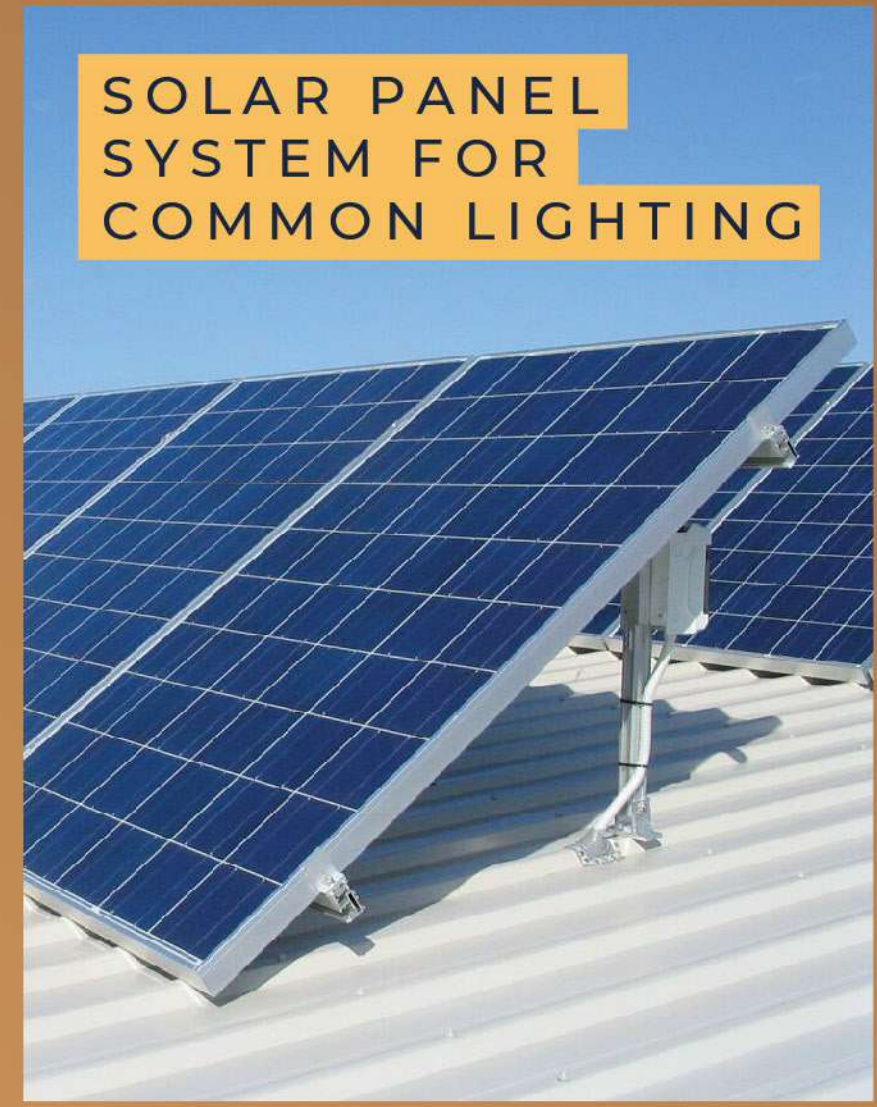
COMMON EV CHARGING POINT



SMART VIDEO DOORBELL



GENERATOR FOR POWER BACKUP



SOLAR PANEL SYSTEM FOR COMMON LIGHTING





**BANQUET HALL ADORNED**  
WITH AN OUTDOOR SITTING



**OPEN CAFE ETCHED**  
WITH A PANTRY



**OPEN-AIR CELEBRATION SPACE**  
CHARMED WITH A STAGE



# OPEN SPACE

TO ENVELOPE YOUR VISITORS

A well-developed terrace always adds a mesmerizing touch to family celebrations. When the necessary infrastructure & facilities are just a stones' throw away from the glitz & glamour of the family event, no one has to worry about serving guests with delight.

2 COMMON TERRACES

2 PANTRIES

4 LAVATORIES

# Specification:



## STRUCTURE

RCC frame structure as per IS code considering earthquake resistance.



## WALLS

- Masonry wall of AAC blocks.
- Internal wall - Smooth plaster with two coats of white putty.
- External wall - Double coat plaster with textured finish or sand face plaster.



## PLUMBING

Suspended plumbing for easy maintenance.



## FLOORING AND DADO TILES

- Living - dining - kitchen - Bedrooms - 48" x 24" or 32" x 32" double charged imported tiles.
- Bathrooms - premium quality decorative tiles upto beam bottom level.
- Bath area - non slippery flooring.
- Kitchen - Premium tiles upto beam bottom in kitchen.
- 1. Sandwiched platform with granite top & S.S. Sink.
- 2. Store with kota shelves.
- Washarea- kota stone flooring and glazed tiles dado.



## ELECTRIFICATION

- Modular electrical accessories and centralised distribution board with MCB for safety protection.
- A.C. Points in all bedroom & living room.
- Concealed and fire resistant copper wiring with A.C., T.V., geyser, water purifier, washing machine and refrigerator points.
- Appropriate earthing and lighting protection.



## DOORS

- All wooden doors are of purely pinewood material.
- Decorative wooden main door designer hardware fittings.
- Other doors are wooden flush doors with locks and wooden frames.
- Video door camera at main door.



## WINDOWS

- Large windows for special attention to views with ample natural lights and ventilation.
- Fully glazed powder coated aluminum sliding window with bottom stone sill.

## BRANDS WE USE (OR EQUIVALENT)



STEEL



CEMENT



FLOORING



WINDOWS



BATHROOM



ELECTRIC



SWITCHES



ELEVATORS



PUTTY



PAINT



PLUMBING



GLASS



# Salient Features:



Designed By  
Renowned Architect  
"Umang Goswami"



Contemporary  
Elevation Design



Centralized  
Security System



24x7 Security  
With CCTV Monitoring



Panic Alarm On  
Each Floor



Decorative  
Name-plates



24x7 Water  
Supply

A PROJECT BY

**CALLISTO**  
BUILDCON LLP

ARCHITECTURE CONS.



ARCHITECTURE DESIGN

STRE. ENGINEER

**सक्षम्**  
SAKSHAM  
CONSULTANTS  
Structural Engineers  
& Project Management Consultants



RERA REGISTRATION NO.  
RERA WEBSITE : [www.gujrera.gujarat.gov.in](http://www.gujrera.gujarat.gov.in)

RERA NO. :  
PR/GJ/GANDHINAGAR/GANDHINAGAR/Others/MAA10226/230522

• Good environment is the main Feature of the Society. • This Brochure is just for an easy presentation of the project and should not be treated as a legal document. • The entire dimensions given are approximate & unfinished. • Irregular payment cause for cancellation of the booking, refund would be given only after the said apartment has been resold (payment received form new purchaser & that to after deducting the cancellation charge.) • The details, facts specification & figures mentioned are compliance for information purpose only and are subject to modification / compliance require as Rera act. • Applicable stamp duty, registration charges, legal expenses, GST at applicable rate or any taxes levied by the government authority are to be borne by members. • Subject to Ahmedabad Jurisdiction. • Total payment by Cheque / DD of NEFT or RTGS in favour of "CALLISTO BUILDCON LLP"

A LOCATION THAT  
KEEPS YOU  
CONNECTED!



## NEARBY DESTINATIONS



## HANGOUT PLACES

PVR Cinemas  
Reliance Smart  
McDonald's

Sarthak Mall  
Upper Deck Cafe  
Mahadev Lake, Sargasan



## HOSPITALS

Aashka Multispeciality Hospital  
Divine Multispeciality Hospital  
M Cure Hospital  
Shraddha Women's Hospital



## SCHOOLS & LEARNING CENTERS

Sahjanand School Of Achievers  
IB Reading Library  
Nicholas The Mentor - Boxing Gym

A PROJECT BY

# CALLISTO

G R O U P

CLICK TO VISIT



Callisto Sapphire, The Palm Road,  
Nr. Swagat Pelican, Sargasan, Gandhinagar 382421

**CONTACT NO. : 76000 04416/26**

RERA NO. : PR/GJ/GANDHINAGAR/GANDHINAGAR/Others/MAA10226/230522