



NR. ASHWAMEGH ELITE, SHIKSHAPATRI ROAD, NORTH SARGASAN, GANDHINAGAR
E: Info@polarisgroup.in | M: 90999 42425 | 90999 42426 | www.polarisgroup.in

[PR/GJ/GANDHINAGAR/GANDHINAGAR/Others/MAA10271/060622](#) | www.gujrerar1.gujarat.gov.in

10.11 design > #PES11965

ARCHITECT
SHAPERS360

POLARIS
casarica _____



COMMITMENT MATTERS

VISION

TO ACHIEVE PAR EXCELLENCE IN OUR
PROJECT, PEOPLE, PROCESS & PERFORMANCE

CORE VALUES

TRUST, QUALITY, PASSION, WIN WIN FOR ALL &
OUT OF BOX THINKING



Commitment is the bridge that has been connecting our group with customer satisfaction. For us at Polaris Casarica Group commitment means a world. Whether it is about quality construction, hassle-free possession or timely delivery we stand true to them all. Customer gratification has gained the prime focus & limelight since we entered the realm of real-estate. We leave no stone unturned in turning our commitment into reality.

COME HOME TO THE AFFLUENT LIVING

Being positioned in the North Sargasan, Polaris Casarica boasts of offering the residences that reflect richness & opulence in sheer sense. The impeccably conceptualized, meticulously designed and strategically planned project is soon shaping into reality to offer the 3BHK podium living opportunity to the home enthusiasts.

POLARIS
casarica

**3 & 4 BHK
THE PODIUM LIVING**

AT NORTH SARGASAN



Being inspired by the finesse of architecture, Polaris Casarica shall mark its glory in North Sargasan in a signature style that's classic & yet trending. As quality defines the ethos of our existence, Polaris Casarica is the treasure-worthy trendsetter at Sarghasan as they have been decking up the cityscapes with projects since long! The residences will seamlessly bring the best of both the worlds i.e sound foundation & attention to detail. Whether it is about quality construction or timely possession, Polaris Casarica will offer you it all.



BEFRIEND
THE RICHES OF
AN OPULENT
LIFESTYLE



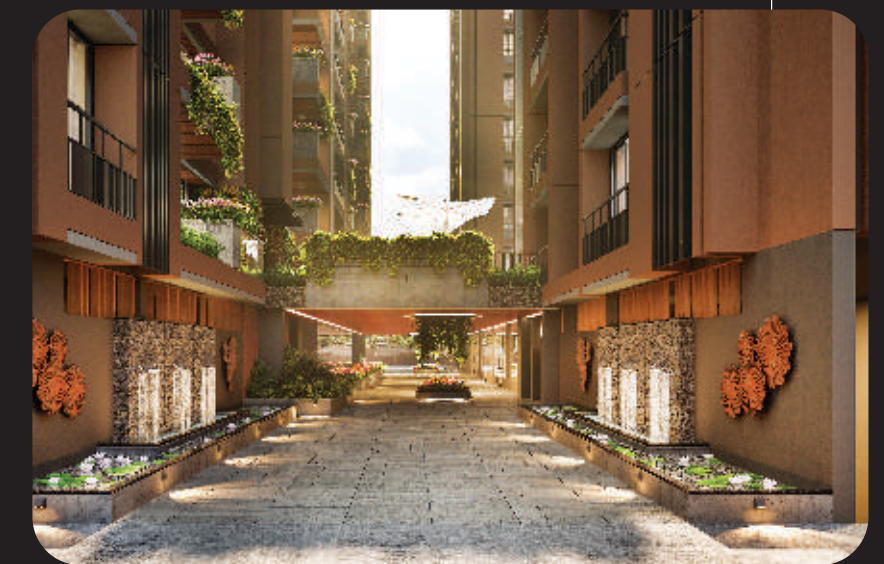
As quality defines the ethos of our existence, the residences will seamlessly bring the best of both the worlds i.e sound foundation & attention to detail. Whether it is about quality construction or timely possession, Polaris Casarica will offer you it all.



A LIFESTYLE
THAT'S WORTH
CELEBRATING



These choicest 3BHK Podium Living apartments are closer to proximity and nearer to the serene beauty of nature, so you can cut down the chaos and double the joy of living. Here the fresh air, natural light and greenery will surround you for a lifetime.



A LIFESTYLE
FULL OF
EXCITING
PRIVILEGES



Every nook & corner of the project has been planned in sync with greenery & green living so the manicured plush green lawns and symbol of beauty; plants will be your neighbours.

A plethora of pleasant amenities like: a grand entrance, road connectivity, children friendly amenities, outdoor seating area, safety & security, breath-taking views and a lot more will adorn your life with a new light of luxury.



AN EXCLUSIVE
LIFE STYLE WILL
SHINE BRIGHT

LIGHTEN UP YOUR LIFE WITH MORE LIFESTYLE AMENITIES



GYM



CHILDREN
PLAY AREA



MULTI PURPOSE
COURT



PARTY LAWN



BOX CRICKET



SKATING



BASKETBALL POLE



STAGE
(OPEN ACTIVITY)



SENIOR CITIZEN
SIT- OUTS



BICYCLE STAND



SEPARATE ENTRY
FOR PODIUM



TREE
PLANTATIONS



COMMON PLOT AT
PODIUM LEVEL



SECURITY
24x7



SWING AREA



AMPLE
PARKING



STREET LIGHT



YOGA DECKS



JOGGING TRACK



ELEVATED
CLUB HOUSE



BENCHES
FOR SITTING



SOLAR
SYSTEM



SERVICE
LIFT



EV CHARGING
POINT



BOX CRICKET



24 HOUR
WATER SUPPLY



CCTV



NO VEHICLE
ZONE



RECEPTION



WATER BODY
STRUCTURE



VIDEO DOOR
PHONE



FIRE SAFETY



CAR WASH
AREA



IN & OUT
WIDE RAMP



ENTRANCE PLAZA



AUTOMATIC LIFT
IN EACH BLOCK



CHILDREN
DROP- OFF ZONE



METER ROOM



WIDE ENTRY
FOYER



BARBEQUE
DECK



R. O. WATER
COOLER



COMMON
TOILET



FOUNTAIN WALL
STRUCTURE



PICKUP &
DROP OFF ZONE



AMPHITHEATER



LILY POND



BOOM BARRIER



LANDSCAPED
COMPOUND WALL

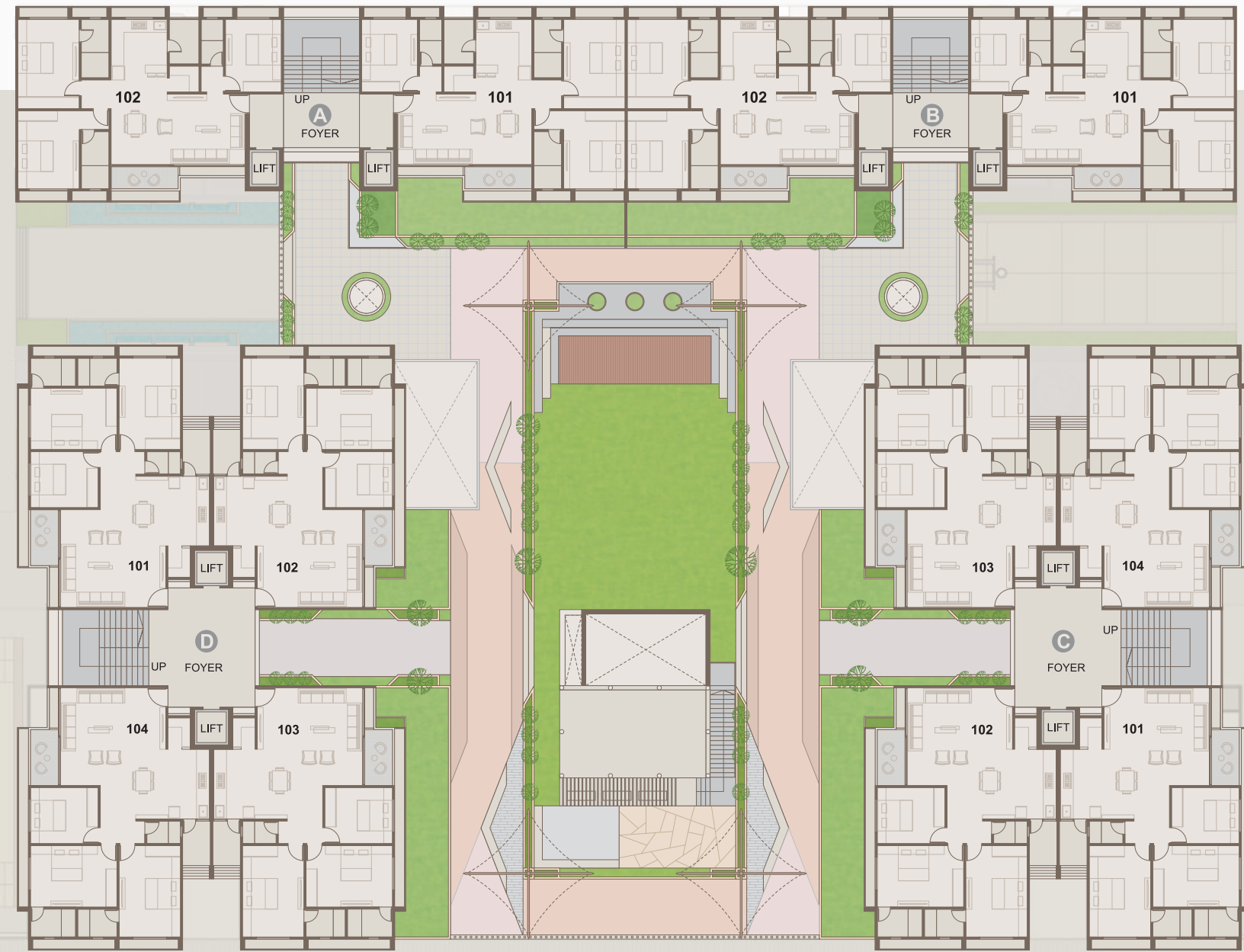


DOUBLE
BASEMENT

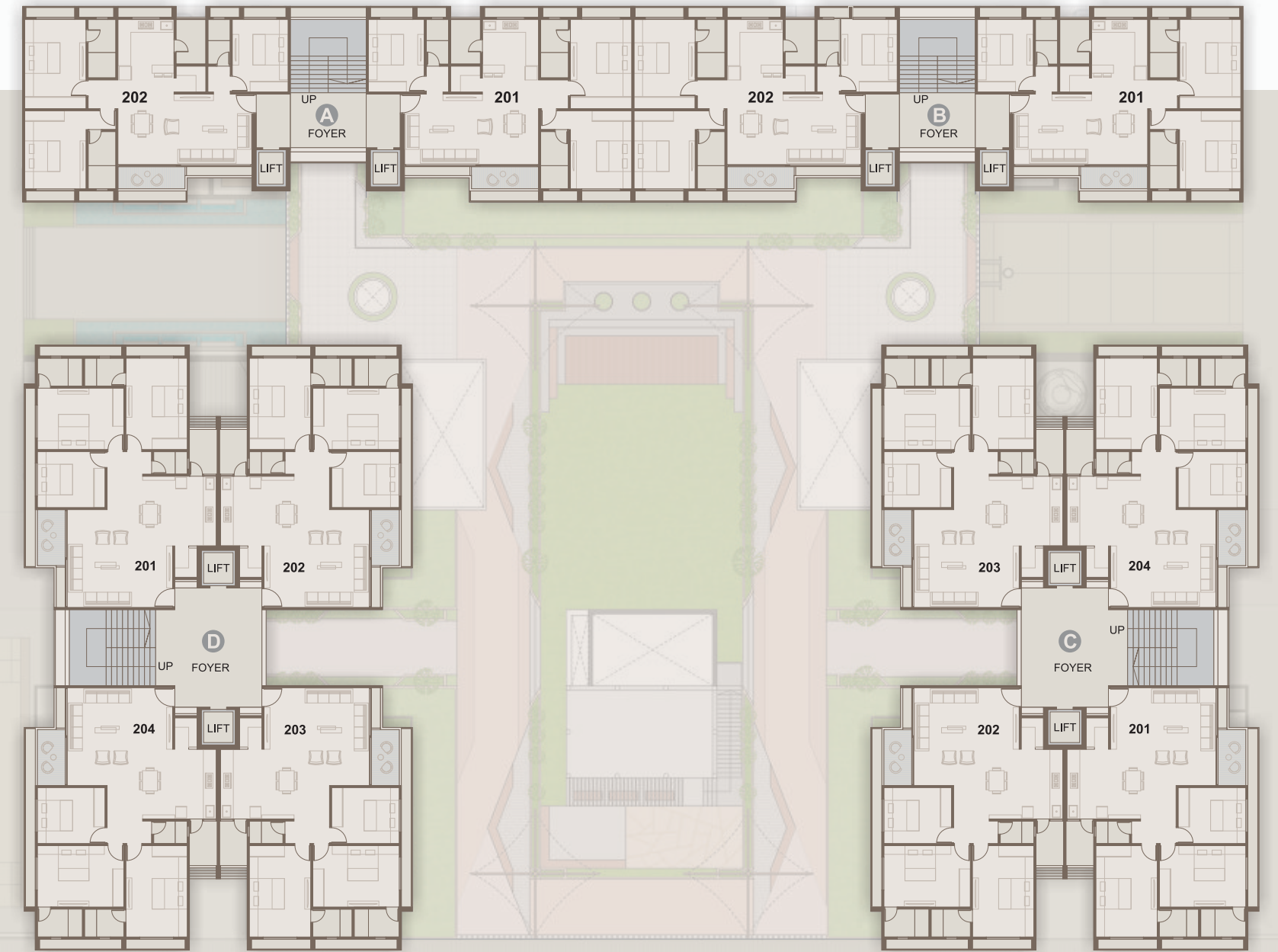


JULA COURT

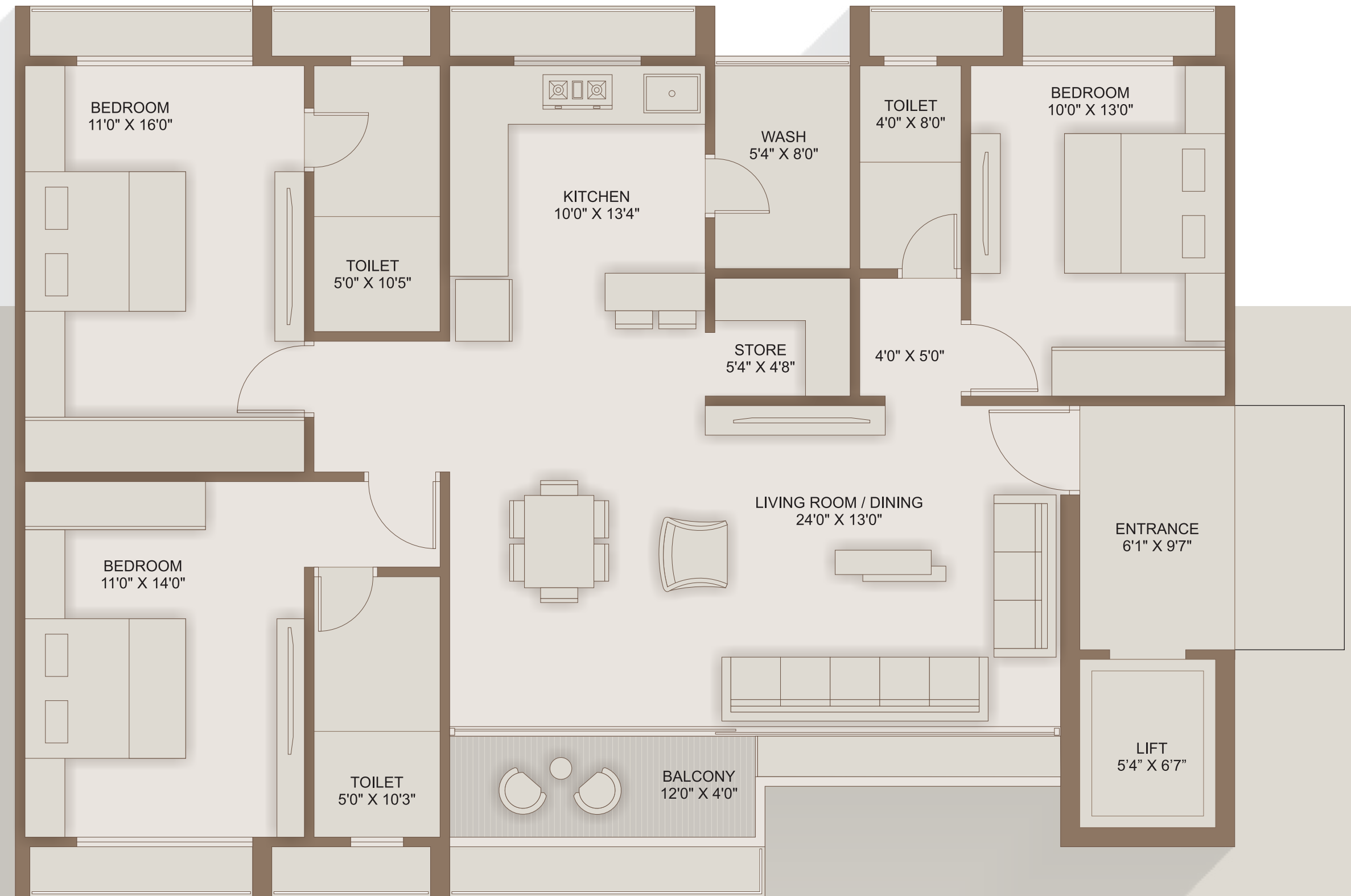
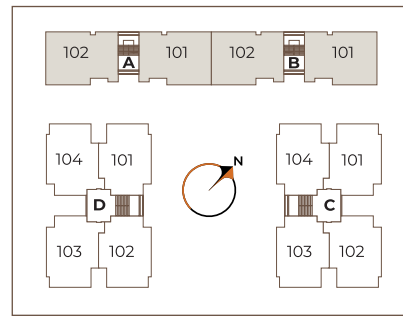
FIRST FLOOR
PODIUM



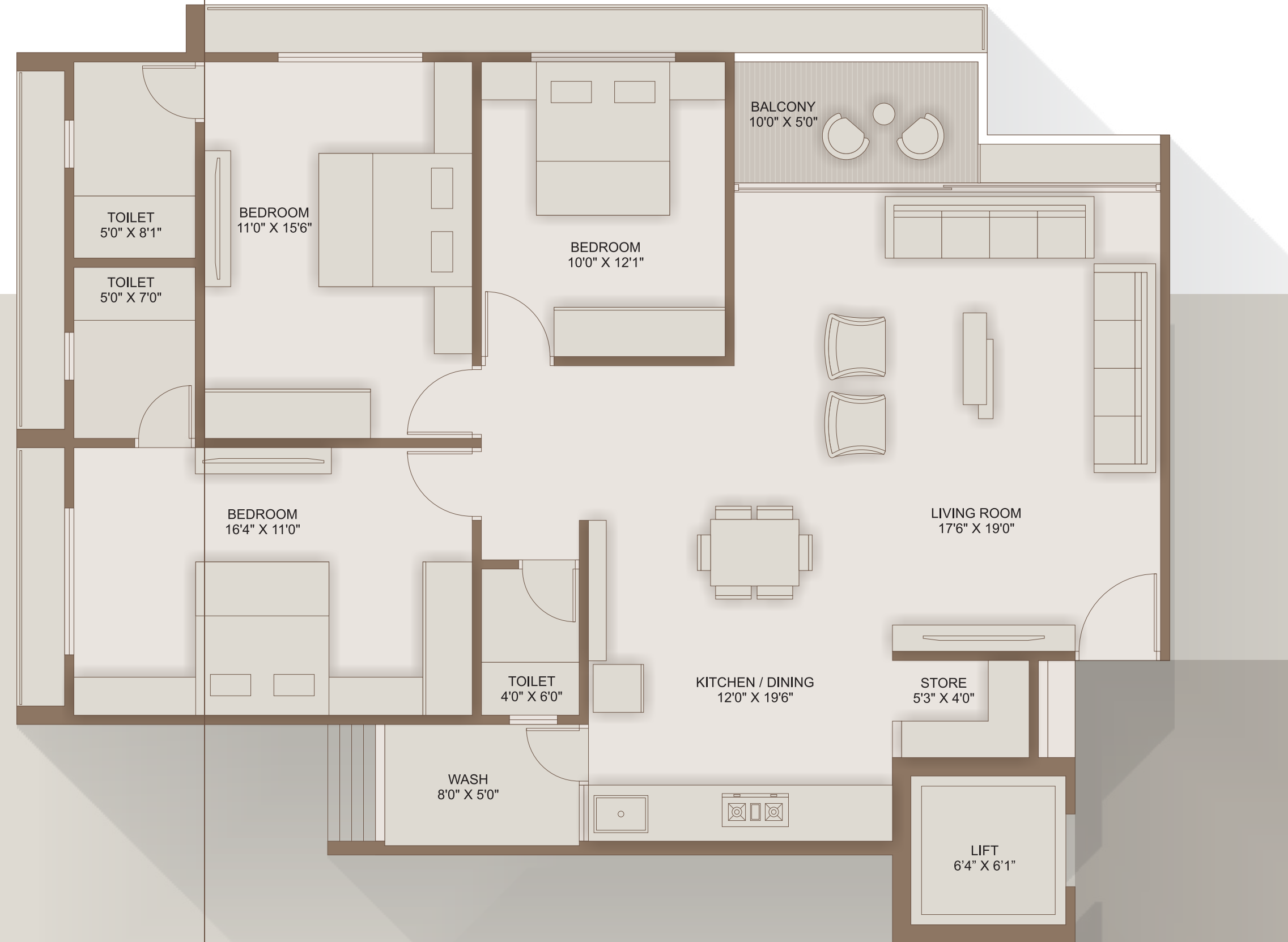
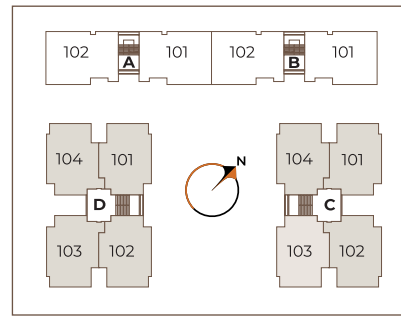
TYPICAL
FLOOR



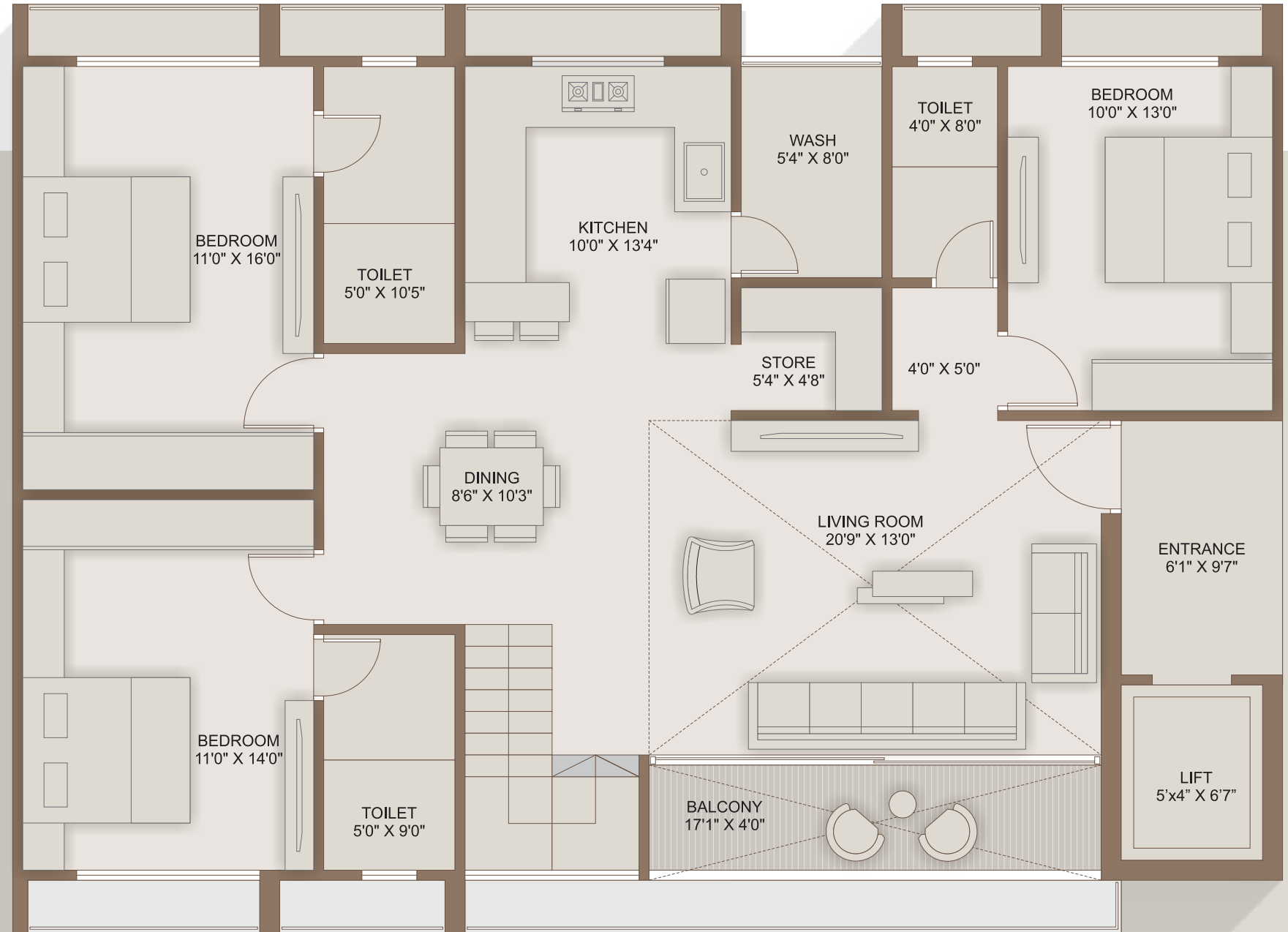
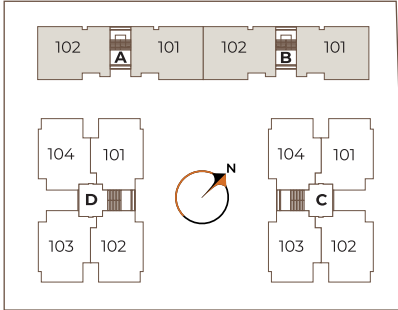
3 BHK BLOCK A & B



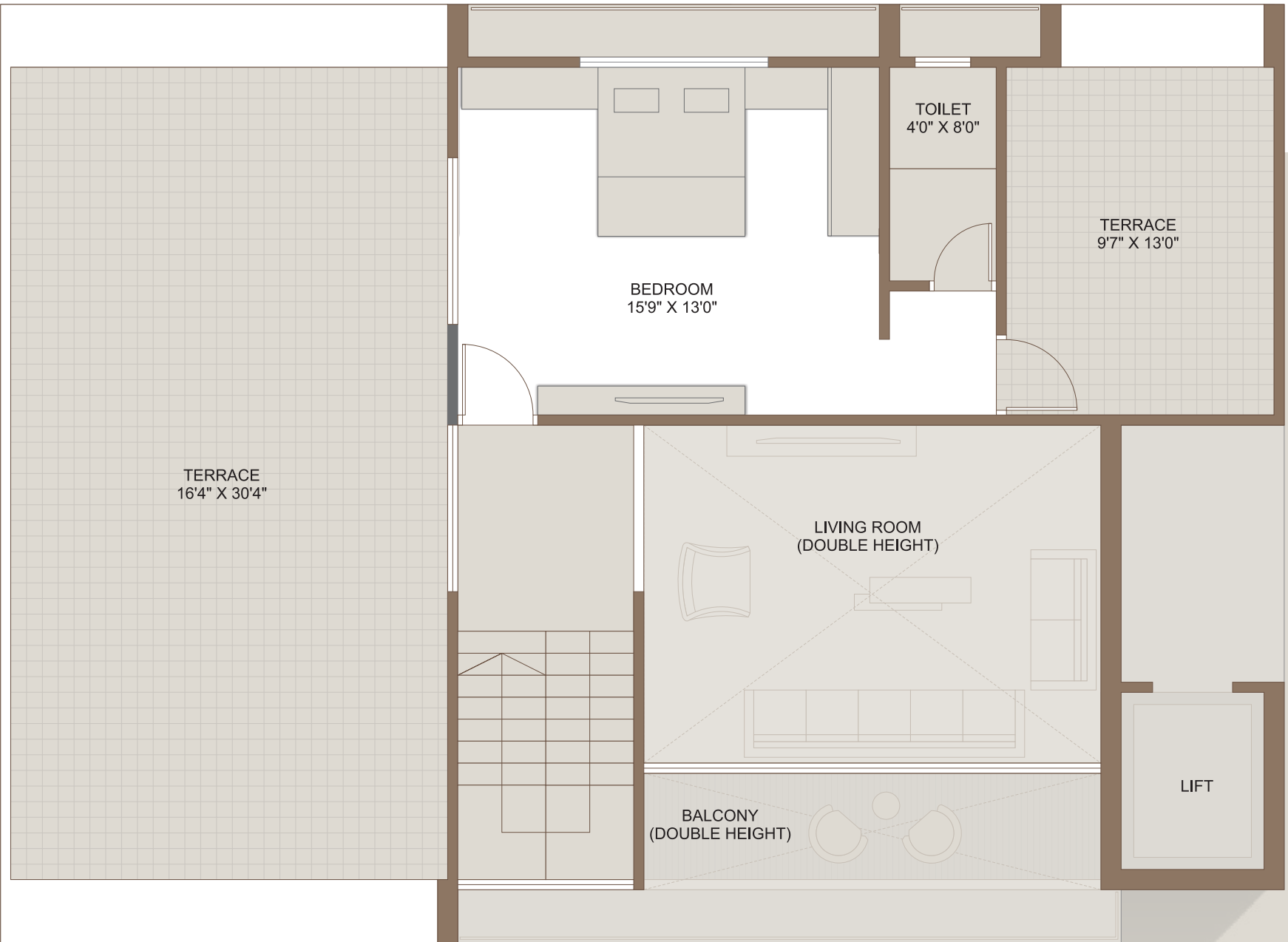
3 BHK BLOCK C & D



4 BHK PENTHOUSE LOWER LEVEL



PENTHOUSE **4 BHK** UPPER LEVEL



CLOSER TO
CONVENIENCES
MAKING
LIFE LAVISH

SPECIFICATION

WALL FINISH

INTERNAL: SMOOTH FINISH MALA PLASTER WITH PUTTY.
EXTERNAL: DOUBLE COAT SAND FACED PLASTER OR TEXTURE FINISH.

FLOORING

VITRIFIED TILES FLOORING IN ALL ROOMS.

CERAMIC TILES FLOORING IN ALL TOILETS GLAZED TILES DADO
UP TO LINTEL LEVEL.

KITCHEN

STANDING POLISHED NATURAL GRANITE KITCHEN PLATFORM WITH SINK &
GLAZED TILES DADO ABOVE THE PLATFORM UP TO LINTEL LEVEL.

DOORS

DECORATIVE MAIN DOOR HAVING LOCK OF REPUTED COMPANY.

INTERNAL DOORS OF LAMINATED FLUSH DOORS OR
COLOURED FLUSH DOOR

WINDOWS

ALUMINIUM SECTION SLIDING WINDOWS WITH GLASS & STONE JAMBS.

PLUMBING

CONCEALED PLUMBING OF GOOD QUALITY UPVC,
CPVC PIPES, C.P. FITTINGS & SANITARY WARE OF REPUTED BRANDS.

TOILETS BOWLS

ELECTRIFICATION

THREE PHASE METER + MCB & ELCB TRIPPER WITH
CONCEALED WIRING WITH ADEQUATE POINTS WITH QUALITY FITTINGS.

PAINT

EXTERIOR PAINTING OF ACRYLIC PAINT.
INTERNAL WALLS DOUBLE COAT PUTTY FINISH.

LIFTS

FINE QUALITY FULLY AUTOMATIC LIFTS.

BRANDS WE USE (OR EQUIVALENT)

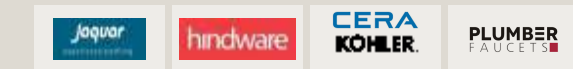
PAINT



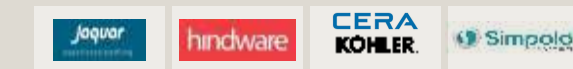
WALL PUTTY



CP FITTINGS



SANITARY WARE



PLUMBING



GLASS



LOCKS



MCBS



SWITCHES & WIRING





POLARIS casarica

Nr. Ashwamegh Elite, Shikshapatri Road
North Sargasan, Gandhinagar



LOCATION QR

RULES & REGULATIONS • Stamp Duty, Registration Charges, Legal Documentation Charges, GST, Maintenance Deposit and any other charges shall be borne by buyer separately. • Any Additional charges of duties levied by government / local authority during or after the completion of the project will be borne by the buyer. • Internal changes shall be done with prior permission and shall be charged in advance. • Changes in external elevation shall not be permitted. • All rights reserved by the developer for alteration / modification / improvement in specification / changes in dimensions and planning shall be binding to all. • Business practices leading to pollution, causing material damage to the not allowed in the premises. • Irregular payments may attract interest or lead to cancellation of booking/s.

DISCLAIMER • This brochure and model are not part of any legal documents. • All dimensions / measurement given are unfinished and approximates. • The photographs & artistic impressions are for references only. Actual building may vary from the representations mentioned in the brochure. • This is not an advertisement within the meaning of RERA. This is not an offer, invitation or commitment of any nature. Recipients are advised to appraise the mselves of the necessary and relevant information of the project prior to making any purchase decisions. All the specifications of the flat shall be as per the final agreement between the parties. • Subject to Gandhinagar jurisdiction only. • T&C Applicable