

PROJECT BY :  
  
**SIDDHARTH**  
GROUP  
SINCE 2008

**SIDDHARTH HAVEN,**  
Near Suraj 48, Vavol – Uvarsad Road,  
New Vavol, Gandhinagar – 382016.  
Contact : +91 9099902767 / 69  
[www.siddharthgrp.com](http://www.siddharthgrp.com)



SIDDHARTH  
**HAVEN**  
SIGNIFICANCE OF CLASSY LIFE

**3 BHK ELEGANT**  
apartments & shops

These World Class Luxury Apartments Come Along With A Range Of Delightful Amenities That Are Sure To Turn Your Life Around. With Plush Interiors And Captivating Exteriors These Exquisite Living Spaces Will Surely Leave You Mesmerized And Ensure A Truly Exclusive Lifestyle.

BLENDING RELAXATION &  
SOPHISTICATION TO  
CREATE THE IDEAL PLACE

SIDDHARTH  
**HAVEN**  
SIGNIFICANCE OF CLASSY LIFE

## OUR JOURNEY



SIDDHARTH SQUARE



DEVASYA HOMES



SNEH RESIDENCY



SNEH GREENS



SIDDHARTH RESIDENCY



SIDDHARTH BUNGALOWS



SIDDHARTH STATUS



SIDDHARTH HOMES



SIDDHARTH ICON



SIDDHARTH SKYZ

## COMPLETED PROJECTS

## CURRENT PROJECTS



SIDDHARTH LUXURIA



SIDDHARTH XCLUSIVE



**SIDDHARTH**  
GROUP  
SINCE 2008

## ABOUT GROUP

Siddharth group presents varied residency and commercial avenues that blend peace, luxury, amenities, and serenity in perfect harmony. the group is known for its sophisticated approach to architecture, incredible detailing, and finest elements, evident in its latest venture - Siddharth Haven - which offers several well - organized apartments right within budget!



HOMES WHERE YOU FIND  
THE SENSE OF  
ETERNAL HAPPINESS

Siddharth haven does not provide  
Homes for aspiring  
People, but a lifestyle to live higher  
On a pedestal





ATTRACTIVE ENTRANCE GATE

WE AIM TO REDEFINE  
A NEW DIMENSION  
OF LUXURY AND RELAXATION

The sunshine, the energy, the  
Atmosphere, the newness,  
Siddharth haven combines all extraordinary  
Natural resources

SIDDHARTH  
**HAVEN**  
SIGNIFICANCE OF CLASSY LIFE

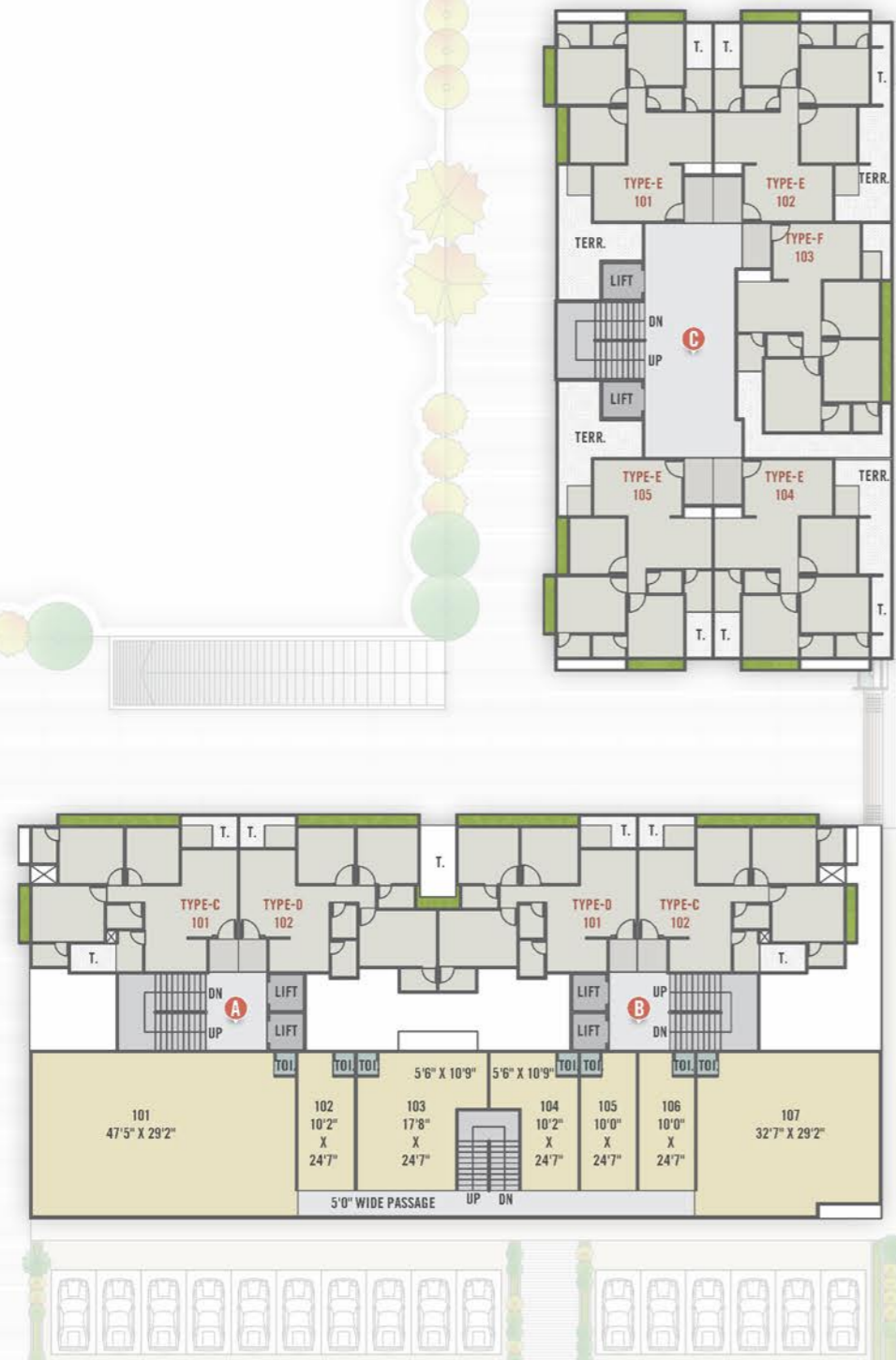
**GROUND FLOOR PLAN**



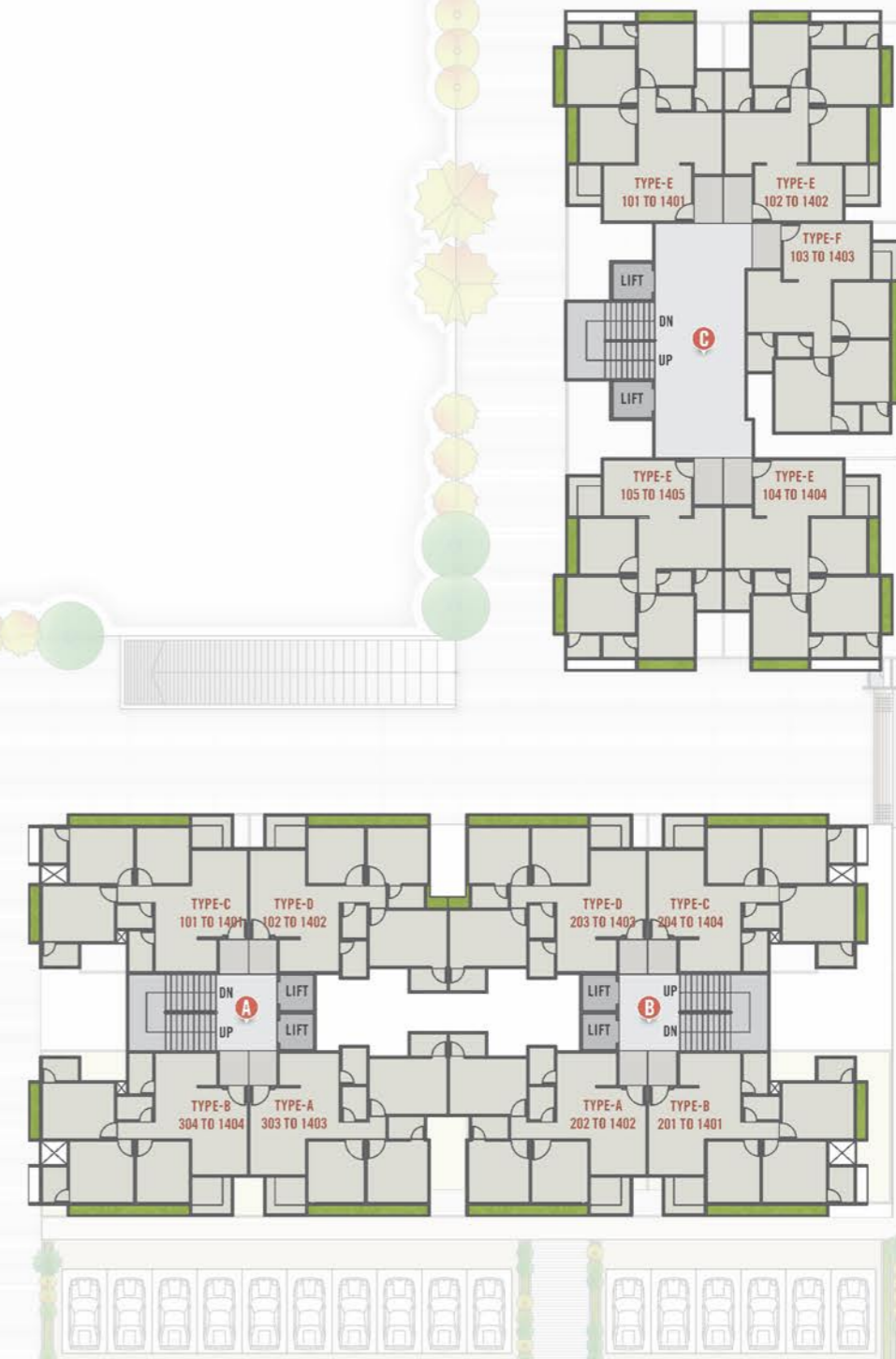
SIDDHARTH  
**HAVEN**  
SIGNIFICANCE OF CLASSY LIFE



**FIRST**  
FLOOR PLAN



**TYPICAL**  
FLOOR PLAN



3 BHK  
UNIT PLAN

(TYPE - 1)

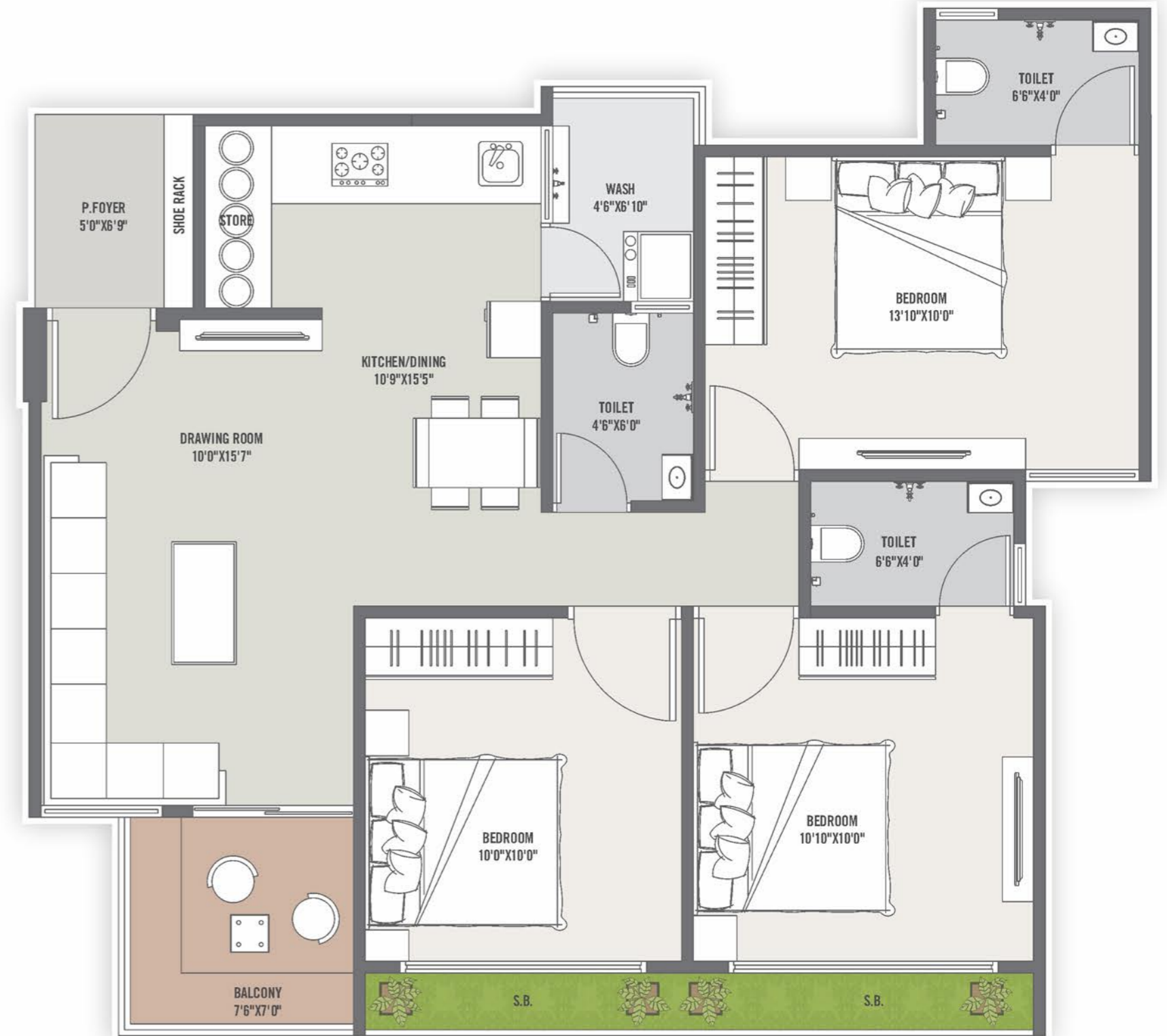
BLOCK - A & B



3 BHK  
UNIT PLAN

(TYPE - 2)

BLOCK - A & B



3 BHK  
UNIT PLAN

(TYPE - 3)

BLOCK - A & B



3 BHK  
UNIT PLAN

(TYPE - 4)

BLOCK - A & B



**3 BHK**  
UNIT PLAN

(TYPE - 1)

BLOCK - C

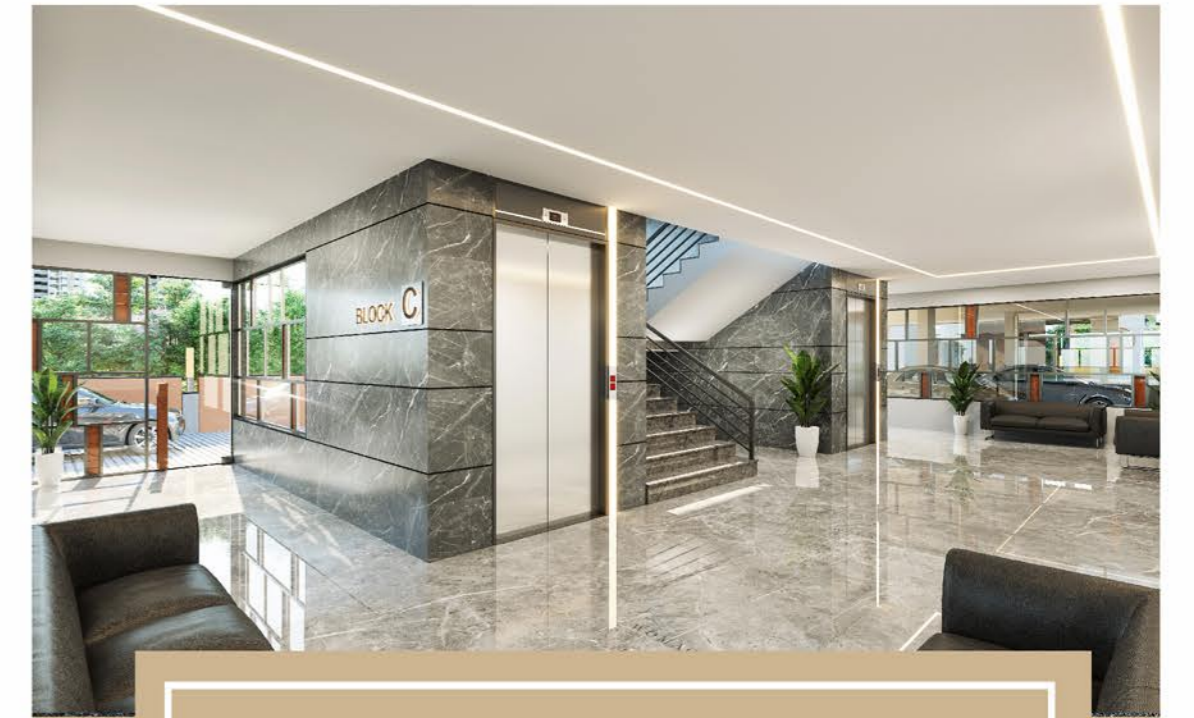


**3 BHK**  
UNIT PLAN

(TYPE - 2)

BLOCK - C





ATTRACTIVE FOYER

SURROUND YOU WITH BEAUTY  
AND  
PEACE OF MIND

Class and luxury rule in  
The ambience of these homes,  
As the residents will love to  
Aim high in every aspect.

SIDDHARTH  
**HAVEN**  
SIGNIFICANCE OF CLASSY LIFE



## OUR FACILITIES :



GYM



INDOOR GAMES



OPEN AIR  
CELEBRATION SPACE



OPEN AIR THEATER



JOGGING TRACK /  
WALKWAY



MEDITATION / YOGA  
DECK



CHILDREN PLAY  
AREA



CHILDREN DROP  
OFF ZONE



KITCHEN & STORAGE  
FOR SOCIETY USE



SENIOR CITIZEN  
SIT-OUTS



VIDEO DOOR  
PHONE



POWER BACK-UP  
GENERATOR



24 X 7 SECURITY



CCTV CAMERA



ENTRANCE FOYER  
& WAITING LOUNGE



24 HRS WATER  
SUPPLY



PROFESSIONALLY  
LANDSCAPED GARDEN

## SIGNIFICANCE OF CLASSY LIFE

Revel and rejoice at the residential avenue that is bound to pamper your senses, relax your physique, rejuvenate your well-being, secure your family, and calm your minds.

SIDDHARTH  
**HAVEN**  
SIGNIFICANCE OF CLASSY LIFE



## SPECIFICATIONS



### STRUCTURE

- RCC frame structure as per is code considering earthquake resistance.



### WALLS

- Masonry wall of AAC blocks.
- Internal wall - Smooth plaster with two coats of white putty.
- External wall - Double coat plaster with textured finish or sand face plaster.



### PLUMBING

- Suspended plumbing for easy maintenance.



### FLOORING AND DADO TILES

- Living - dining - kitchen - Bedrooms - 32" x 32" or 24" x 24" double charged imported tiles.
- Bathrooms - premium quality decorative tiles upto beam bottom level.
- Bath area - non slippery flooring.
- Kitchen - Premium tiles upto beam bottom in kitchen.
- 1. Sandwiched platform with granite top & S.S. Sink.
- 2. Store with kota shelves.
- Washarea- kota stone flooring and glazed tiles dado.



### ELECTRIFICATION

- Modular electrical accessories and centralised distribution board with MCB for safety protection.
- A.C. Points in both master bedroom and living room.
- Concealed and fire resistant copper wiring with A.C., T.V., geyser, water purifier, washing machine and refrigerator points.
- Appropriate earthing and lighting protection.



### DOORS

- All wooden doors are of purely pinewood material.
- Decorative wooden main door with veneer finish and designer hardware fittings.
- Other doors are wooden flush doors with locks and wooden frames.
- Video door camera at main door.



### WINDOWS

- Large windows for special attention to views with ample natural lights and ventilation.
- Fully glazed powder coated aluminum sliding window with bottom stone sill.

**Disclaimer :** Premium quality materials or equivalent branded products shall be used for all construction work • GEB charges, gas charges, legal charges and other Govt. charges shall be paid separately. • Maintenance deposit shall be paid separately. • Right of any changes in dimensions, design & specifications will be reserved with the developer, which shall be binding for all members. • External changes strictly not allowed. • Stamp duty, registration fees, and service tax charges on allotment and possession of the property shall be borne by the purchaser, applicable as per prevailing law. • Any additional liabilities due to change in the by-laws, stamp duty govt. laws shall be borne by the members. • New rate will be applicable in case of delay in payment terms. Terms & conditions will be as per separate agreement. • This brochure is meant only for information, presentation & guidance purposes, It is not an authorized document or an agreement. This does not form the basis of any contract. • Variations may occur as per local regulations and developer's policy of improvement.



Address : Siddharth Haven,  
Near Suraj 48, Vavol - Uvarsad Road, New Vavol,  
Gandhinagar - 382016.  
Contact : +91 9099902767 / 69

E-mail : [haven.siddharthgroup@gmail.com](mailto:haven.siddharthgroup@gmail.com)  
Website : [www.siddharthgrp.com](http://www.siddharthgrp.com)

RERA NO. : PR/GJ/Gandhinagar/Gandhinagar/Other/MAA09886/050322  
[www.gujrera.gujarat.gov.in](http://www.gujrera.gujarat.gov.in)

Project By



Architects Cons.



Stre. Engineer



Promoter

